

Racial & Social Justice In Social Work:

Making It Personal



Charla Yearwood, LCSW
Therapist & Cultural Disrupter
Connected In Community, LLC

Shimon Cohen, LCSW
Host/ Producer
Doin' The Work: Frontline Stories of
Social Change

What you need to know

Guidelines that might help you understand and participate in today's presentation

- 1 We will be discussing racism and oppression in social work- we will not be debating the validity of racism or oppression
- 2 There will be opportunities for personal reflection and sharing as desired, we respect the vulnerability of participation
- 3 Questions will be entertained throughout the presentation through chat. We encourage you to engage with us and each other through this feature.





A Day In the Life

Storytelling:

How we've experienced resistance, pushback, and faced consequences as we've challenged white supremacy and racist ideologies In social work spaces.

**"Social work is all
about equality"**

Historically, social work has positioned itself as a progressive profession, but is this true?

**"This is how
we've always
done things"**

Resistance to growth and/or change in the social work community.

**"Social Workers
are Change Agents"**

What are we changing?

**"I've committed my
life to researching
equity"**

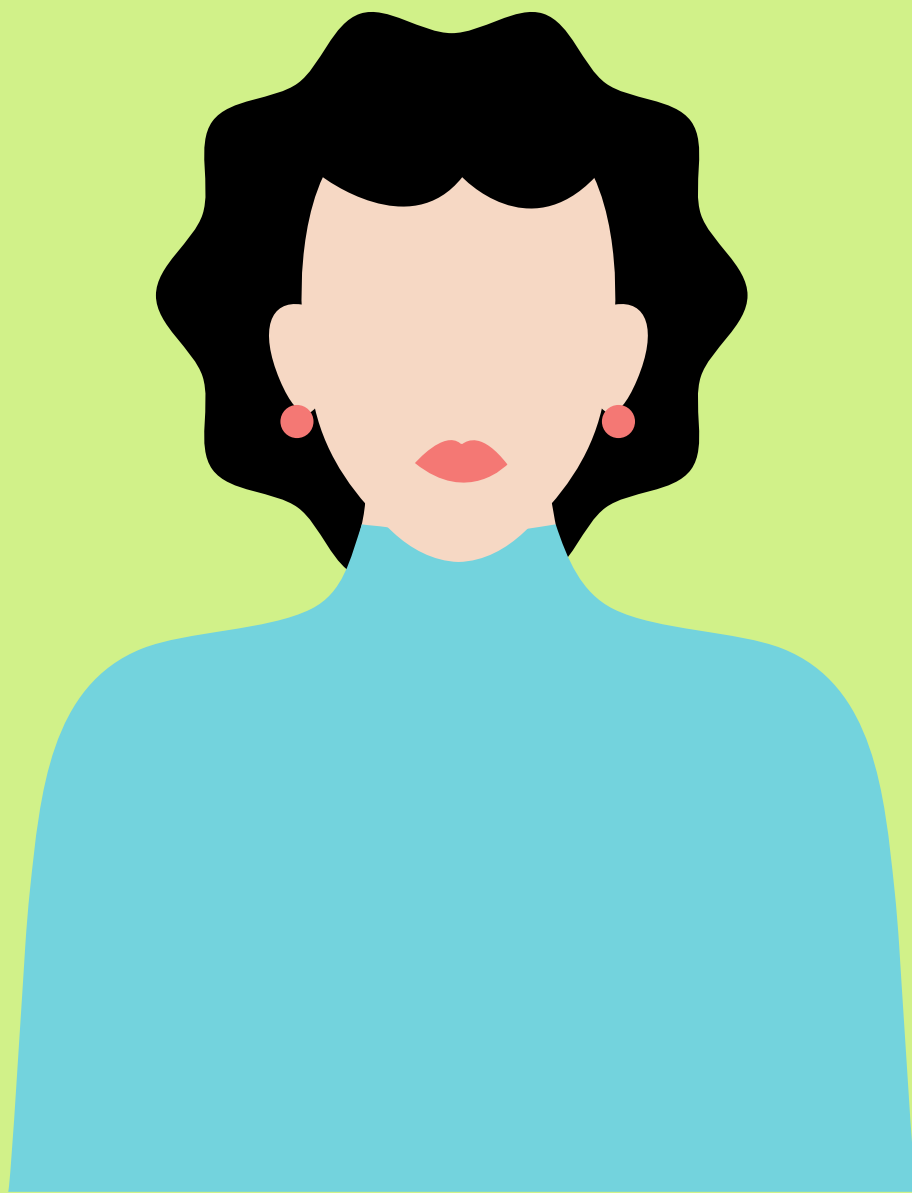
Why are we making this work about our
own access, power, and privilege?

What racism is v. what racism is not

Let's pause to reflect on some common misunderstandings
about how racism looks, feels, and shows up.



What about you and your career?



Reflect on your work the past month, 6 months, and year

- Have you gone to lunch, talked on the phone, or engaged socially with a person of a different race or ethnicity than yourself?
- Have you been in a space where you were the minority?
- Have you advocated for policy change, where you work, to make your workplace more equitable?
 - When someone else advocates for change, do you support their efforts?



What's radical
today isn't radical
tomorrow.

Movements for Change



Abolition

Abolition from the prison systems, the non profit industrial complex, the medical model of care, and the punitive child welfare system.



SWCAREs

Social Work Education & History

Engaging in critical reflection around our work and how we have supported oppressive systems.



Challenging the work

There are social workers engaged in work that could be seen as human rights violations.

- Where does your career land you in the scope of current social justice movements?
- Are you blocking/hindering racial justice?
- What do you want to do? What are your intentions?

- How are you moving society to be more racially just?
- How can we reduce harm?



Moving Forward

What are you willing to do moving forward?



Thank you



Charla Yearwood

www.connectedincommunity.org



Shimon Cohen

www.dointhework.com

**DOIN'
THE
WORK:**
Frontline Stories
of Social Change