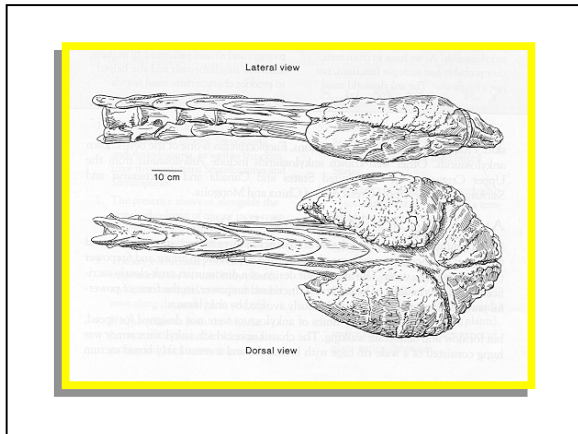


Exam 3 Review Topics (i.e. highlights) Chapter 8 Ankylosaurs



Ankylosaurs (general Chara)

- Medium-sized up to 9m
- Quadrupedal
- Plant eating ornithischians
- Small heads
- Leaf-shaped and non-interlocking teeth
- continuous dorsal shield
- Spikes and spines (maybe)
- Club at end of tail
- Fenestra closed in front eye
- Top skull more plates
- Cretaceous

Ankylosaurs -

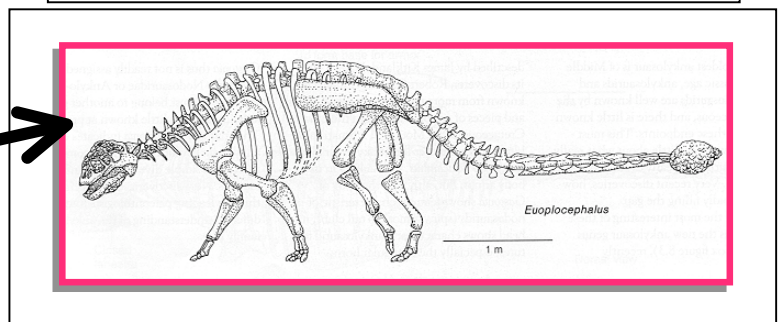
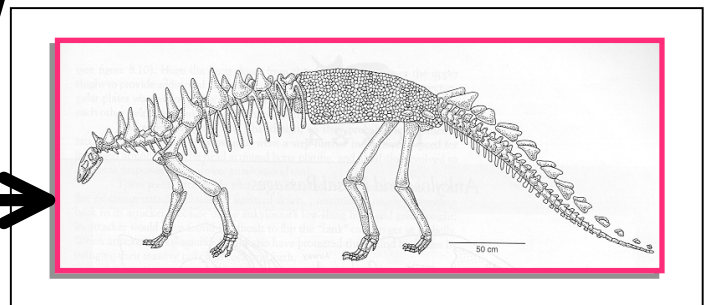
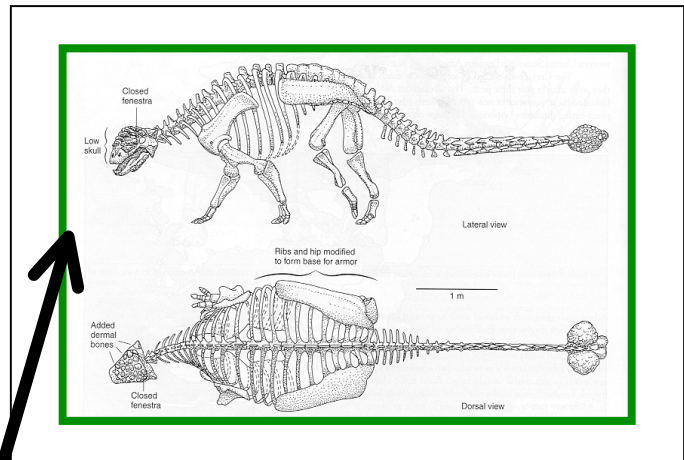
- Ankylosaurids
- Nodosaurids

Nodosaurids

- No club
- Small thin head
- Lack of ossified tendons
- Nasal passages simple

Ankylosaurids

- Heads wide and armored (as wide as long)
- Triangular horns at posterior corners
- Lateral temporal fenestrae covered
- Complex nasal passages



- Few or no spines
- Last couple of caudal vert braced by ossified tendons
- Club at the end of caudals
- Club made of plates
- Digestion
- Balance speed, armor and firepower
- Slow walker

