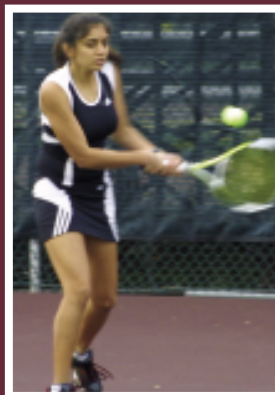
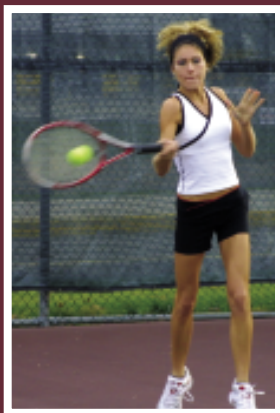


KUTZTOWN

U N I V E R S I T Y



2007

TENNIS



A Look at Kutztown University of Pennsylvania

History:

Kutztown University of Pennsylvania, a member of the Pennsylvania State System of Higher Education, was founded in 1866 as Keystone Normal School. It became Kutztown State Teachers College in 1928, Kutztown State College in 1960, and achieved university status in 1983. Today, Kutztown University is a modern, comprehensive institution and is accredited by the Middle States Association of Colleges and Secondary Schools.

Location:

Kutztown University's picturesque 325-acre campus is located in a Pennsylvania Dutch community mid-way between Allentown and Reading. Several large cities are easily accessible, including Philadelphia and New York.

Enrollment:

Approximately 10,000 full- and part-time undergraduate and graduate students. Most are Pennsylvania residents, but students from 24 states and 38 nations are represented in the student body: 60% women, 40% men.

Academic Year:

Consists of two 15-week terms. The university also offers classes during two five-week summer sessions.

Faculty:

Teaching-focused with scholarly expertise; many are engaged in research, student/faculty research, writing and consulting. There is a 19:1 student/faculty ratio.

Majors/Degrees:

KU has nearly 60 undergraduate majors in the Colleges of Liberal Arts and Sciences, Visual and Performing Arts, Business, and Education. There are 19 graduate degree programs within the College of Graduate Studies and Extended Learning. Degrees at Kutztown include the B.A., B.F.A., B.S.B.A., B.S.N., B.S.W., B.S.Ed.; M.A., M.B.A., M.P.A., M.L.S., M.S., and M.Ed.

Special Academic Programs:

There are honors programs throughout the undergraduate curriculum, Phi Kappa Phi and Alpha Epsilon Lambda national honor societies, 17 international exchange and study abroad programs, freshmen seminars, independent study, internships, four MBA locations, and diversified and intensive academic support services.

Library:

Modern, spacious facility; 517,000 bound volumes, as well as thousands of maps, periodicals and microforms; Endeavor integrated library system; numerous Web databases; Internet; electronic full-text periodical databases; 191 computers, including laptops; 527 network connections; seating for 800 patrons.

Special Facilities:

Wireless campus, gallery, planetarium, observatory, TV production facilities, 30 student-accessible computer labs containing nearly 500 PCs/Macs, cartography lab, early learning center, smart classrooms, curriculum materials center and Pennsylvania German Heritage Center.

Student Life:

Nearly 200 student organizations include: academic, advisory councils, campus media (including a fully-equipped radio station and student newspaper), diversified interest, Greek Life, performing arts, public service, special interest, sports (club and recreation) and visual arts affiliates. Entertainment options include concerts, dances, lectures, comedy, excursions and cultural events. The McFarland Student Union houses the bookstore, movie theater, game room, snack bar, TV lounge, coffeehouse, financial center and cyberlounge.

Residence Halls:

Ten residence halls (6 coed, 2 single gender, 2 modified single gender), two apartment-style coed complexes and one residence house accommodate 4,434 students. All residence halls are wired for cable TV, telephone, Internet and campus network access.

In accordance with the Equity in Athletics Disclosure Act of 1994 (section 360B of Pub. L. 130-382), the Kutztown University Athletic Department has made information concerning its intercollegiate athletics programs available to the public. This information is on file at Rohrbach Library and the athletic department main office. Questions can be directed to the athletics office, (610) 683-4094. Kutztown University is committed to Affirmative Action, equal employment and educational opportunity in compliance with Title VI and VII of the Civil Rights Act of 1964, Executive Order 11246, the Educational Amendments under Title IX of 1972, Sections 503/504 of the Rehabilitation Act of 1973, and the Americans with Disabilities Act of 1990.



Table of Contents

A look at KUInside Front Cover
 Head Coach Suresh Ramamurthi 2
 2006-07 Outlook 3
 Golden Bear Profiles-Men 4-5
 Golden Bear Profiles-Women 5
 2005-06 Golden Bears 6
 2005-06 Season Review-Men 7
 2005-06 Season Review-Women 8
 Facilities 9
 Records 10
 History 11
 Student Recreation Center 12
 2005-06 PSAC Dixon Trophy 12
 Academics & Athletics 13

For additional information, contact:

KU Sports Information Office:

(610) 683-4182

KU Athletics Department:

(610) 683-4094

Email: athletics@kutztown.edu

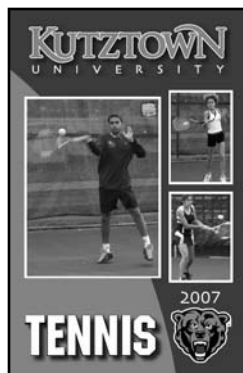
Golden Bear Hotline:

(610) 683-1515

Kutztown University of Pennsylvania is a member of the State System of Higher Education.

University Quick Facts

Location	Kutztown, PA 19530
Enrollment	10,000
President	Dr. F. Javier Cevallos
Athletics Director	Greg Bamberger
Associate AD	Michelle Gober
Athletics Phone	(610) 683-4094
Nickname	Golden Bears
Colors	Maroon & Gold
Affiliation	NCAA Division II
Conference	PA State Athletic (PSAC)
Sports Medicine	Rennie Sacco, Jack Enriken & Martha Anderson
Sports Information	Josh Leiboff
Phone	(610) 683-4182
Email	leiboff@kutztown.edu
Graduate Assistant	Jill Wentzel



On the Cover

On the cover of the 2006-07 Men's & Women's Tennis Media Guide are (clockwise from left): Som-deep Appineni, Sabrina Arnaud, Priya Pachkawde
(photos by KU Sports Information)

The 2006-07 Kutztown University Tennis Media Guide

is a production of the Kutztown University Sports Information Office. It was written and designed by Jill Wentzel, sports information graduate assistant and edited by Josh Leiboff, Coordinator of Sports Information. Photography by Jeff Unger, Unger Studios (unless noted).

Tennis Facts

Head Coach	Suresh Ramamurthi
Alma Mater	Poona, '83
Career Record (Yrs) ..	(M) 112-28 (8th) (W) 53-78 (8th)
Record At KU (Yrs) ..	(M) 112-28 (8th) (W) 53-78 (8th)
Phone	(610) 683-4380
Email	ramamurt@kutztown.edu
2005-06 Record	(M) 14-3, (W) 12-4
(M) PSAC/Finish	5-0/1st of 6
PSAC Playoff Finish	1st of 4
NCAA Regional Finish	1st of 4
NCAA Championships	t-9th of 16
(W) PSAC East/Finish	3-1/2nd of 5
PSAC Playoff Finish	t-3rd of 4
NCAA Regional Finish	1st of 4
NCAA Championships	t-9th of 16
Homecourt	KU Courts
Capacity	100
Starters Returning/Lost	(M) 4/2 (W) 1/5



Head Coach Suresh Ramamurthi

Suresh Ramamurthi is in his eighth season as head coach of the men's and women's tennis programs at Kutztown University.

Last year, the men's team won the Pennsylvania State Athletic Conference (PSAC) Championship, an NCAA East Regional title and advanced to the NCAA Championships, tying for ninth place. The Golden Bears finished 14-3 with a perfect 5-0 record in the PSAC. Four athletes earned All-PSAC honors, including the PSAC Athlete of the Year and PSAC Rookie of the Year.

Under Ramamurthi's guidance, the Golden Bear men have won six of the last seven PSAC Championships (2000, 2001, 2002, 2004, 2005, 2006). The team has appeared in nine-consecutive NCAA East Regional qualifiers, winning the last five to advance to the NCAA Championship round of 16. He has coached 26 All-PSAC selections.

Ramamurthi has amassed a 112-28 dual-meet record on the men's side. In 2002, Ramamurthi was named the PSAC and NCAA Division II East Region Coach of the Year.

For the women, the Golden Bears' finished the 2005-06 season with a 12-4 mark, including a 3-1 mark in the PSAC East. KU won an NCAA East Regional qualifier for the second-straight year to advance to the NCAA Championship round of 16. Four players earned All-PSAC East honors, as well as the PSAC East Athlete and Rookie of the Year awards.

The women's program has completed a resurgence under Ramamurthi in recent years. The team has competed in the NCAA East Regionals each of the past three seasons, advancing to the NCAA Championships the last two, compiling winning records for the first time since 1997-98. He has coached 10 All-PSAC/All-PSAC East selections.

Ramamurthi amassed over 20 years of experience before coming to Kutztown for his first collegiate coaching position. He served five years as director of tennis and head professional at the Talamore Golf & Country Club in Ambler, PA. He also served as director of tennis at the Willow Grove Racquet Club, the Upper Dublin Racquet Club, the Indian Falls Swim & Tennis Club (Wayne, PA), and the Gulph Mills Racquet Club (King of Prussia, PA).

Previously, Ramamurthi had been the director of tennis at the Chester Valley Golf Club (Malvern, PA) and the St. Albans Tennis Club (Newtown Square, PA).

He has coached all levels of players, from children to adults. He coached top collegiate athletes, including David DiLucia, the top ranked NCAA Division I player in 1992, on the ATP Tour. Ramamurthi also coached Lisa Raymond, who has been ranked in the top 25 on the WTA tour.

A 1983 graduate of the University of Poona, in Maharashtra, India, with a master's degree in commerce, Ramamurthi was a four-year member of the varsity tennis team. He represented Poona at the Indian National Championships twice.

Ramamurthi recently concluded a three-year term as chairman of the NCAA East Region Tennis Committee.



Golden Bear Men's Tennis Poised for Another Strong Season in 2006-07

Kutztown University's men's tennis team will look to continue its reign as one of the top programs in the East Region and NCAA Division II. KU has won six of the last seven Pennsylvania State Athletic Conference (PSAC) Championships, as well as the last five NCAA East Regional qualifiers.

With a strong nucleus of veterans and an infusion of new talent, the 2006-07 season should be a memorable one for the Golden Bears.

Leading the way for KU is second year player and PSAC Rookie of the Year **Santiago Baquerizo**. Baquerizo won the PSAC individual singles championship. He had a singles record of 12-2 where he played as the team's #1 seed. In doubles, as mostly the #2 seed with Radoslaw Hlubinski, he compiled a record of 11-3.

Returning for his sophomore season is All-PSAC doubles selection **Lukas Labitsch**. In his first season, he went 11-2 in singles, playing mainly at #4, and 16-5 in doubles playing the #1 seed with partner Harsh Sharma.

With the doubles partners for both Baquerizo and Labitsch lost to graduation, the duo is expected to combine for a formidable doubles team this season.

Also returning is the spring 2006 PSAC Doubles Championship team of senior **Somdeep Appineni** and junior **Rubens Vianna**. Appineni was 7-4 in singles (#5 seed) and 14-5 in doubles play. Vianna was 10-4 in singles (#6), while he was 13-5 in doubles matches. The duo was 10-5 in doubles together, including a perfect 3-0 record at the spring 2006 PSAC Individual Championships doubles bracket.

Senior **Lukas Beman** will return for the spring semester. Beman was 6-1 in singles and was 8-2 in doubles play in 2005-06.

Several newcomers are expected to make an immediate contribution. Looking to challenge for court time are **Arpit Sharma (Kolkata, INDIA)** and **Joel Irwin (Thorndale/Bishop Shanahan)**.

KU Women's Tennis Rebuilding in 2006-07

Kutztown University's women's tennis team will enter the 2006-07 season looking to rebuild after several highly competitive seasons.

The Golden Bears were 12-4 overall, 3-1 in the Pennsylvania State Athletic Conference (PSAC) Eastern Division last year. KU won its second-straight NCAA East Regional Qualifier to advance to the NCAA Round of 16, where KU tied for 9th place. With just one starter returning, head coach Suresh Ramamurthi will look to a number of newcomers to fill in the gaps as KU hopes to stay among the elite women's tennis programs in the region.

Leading KU's efforts this year will be senior **Priya Pachkawde**. A 2005-06 All-PSAC East doubles selection, Pachkawde was 12-7 in doubles, playing mostly #1 seed. She was 11-2 in singles play, taking the court mostly at third seed. She will be KU's #1 player this season.

Sophomore Tarin Schulze also returns, after seeing limited court time last season.

The rest of KU's squad will be made up of newcomers. **Sabrina Arnaud (Pintendre, QUEBEC)** and **Katie Miller (Fleetwood/Fleetwood)** headline the list of new Golden bears. Arnaud, a freshman, is expected to play at the #2 singles seed, while Miller, a junior, is likely to play at #3.

Shelby Bassett (jr. Malvern/Great Valley), **Melissa Sowerwine (Topton/Brandywine Heights)**, **Lindsay Blackwell (Topton/Brandywine Heights)** and **Barbara Joerns (Ludwigshafen, GERMANY)** will look for court time.



Somdeep Appineni

SENIOR Hyderabad, INDIA

Major: Physics

Honors: 2004-05-second team All-PSAC; 2005-06-PSAC Champion (doubles)

Notes: Saw action at third-through-sixth singles, and all-three doubles seeds.

CAREER STATS	SINGLES	DOUBLES
YEAR	Record/Primary Pos.	Record/Primary Pos.
2003-04	3-3 (.500)/5th	11-5 (.688)/2nd
2004-05	16-5 (.762)/4th	19-6 (.760)/2nd
2005-06	7-4 (.636)/5th	14/5 (.737)/3rd
TOTAL	26-12 (.684)	44-16 (.733)



Santiago Baquerizo

SOPHOMORE Guayaquil, ECUADOR

Major: Leisure & Sport Studies

Honors: 2005-06-PSAC Champion (singles), PSAC Rookie of the Year, All-PSAC (singles)

Notes: Played primarily at #1 singles...second player in KU history to win PSAC singles championship.

CAREER STATS	SINGLES	DOUBLES
YEAR	Record/Primary Pos.	Record/Primary Pos.
2005-06	12-2 (.857)/1st	11-3 (.786)/2nd



Lukas Beman

SENIOR Woodend, AUSTRALIA

Major: General Studies

Honors: 2003-04-second team All-PSAC

Notes: Played at fourth and sixth singles last season...undefeated in five singles matches as a freshman.

CAREER STATS	SINGLES	DOUBLES
YEAR	Record/Primary Pos.	Record/Primary Pos.
2003-04	5-0 (1.000)/6th	8-2 (.800)/3rd
2004-05	11-6 (.647)/5th	19-4 (.826)/3rd
2005-06	6-1 (.857)/4th	8-1 (.889)/3rd
TOTAL	22-7 (.759)	35-7 (.833)



Lukas Labitsch

SOPHOMORE Bruck an der Mur, AUSTRIA

Major: Business

Honors: 2005-06-PSAC Tournament MVP, All-PSAC (doubles)

Notes: KU's #4 singles player last year...was undefeated in four matches at #2 and #2 singles...

CAREER STATS	SINGLES	DOUBLES
YEAR	Record/Primary Pos.	Record/Primary Pos.
2005-06	11-2 (.846)/4th	16-5 (.762)/1st

Golden Bear Profiles - MEN



Rubens Vianna

JUNIOR Belo Horizonte, BRAZIL

Major: Business Management

Honors: 2005-06-PSAC Champion (doubles)

Notes: Rounds out a solid line-up playing primarily at 6th singles...saw action at second and third doubles with four different partners.

CAREER STATS	SINGLES	DOUBLES
YEAR	Record/Primary Pos.	Record/Primary Pos.
2005-06	10-4 (.714)/6th	13-5 (.722)/3rd

Golden Bear Profiles - WOMEN



Sabrina Arnaud

FRESHMAN Pintendre, CANADA

Major: Undeclared

Notes: One of KU's top newcomers...expected to compete for a top singles and doubles spot in KU's lineup.



Katie Miller

JUNIOR Fleetwood, PA

Major: Speech Communication

Notes: Joins the Golden Bear squad this season...expected to make an impact at the upper singles and doubles seeds.



Priya Pachkawde

SENIOR Nasik, INDIA

Major: Accounting

Honors: 2003-04-second-team All-PSAC; 2005-06-All-PSAC (doubles)

Notes: Started each of first three seasons...primarily played at third singles and first doubles in 2005-06.

CAREER STATS	SINGLES	DOUBLES
YEAR	Record/Primary Pos.	Record/Primary Pos.
2003-04	10-5 (.667)/3rd	11-1 (.916)/2nd
2004-05	13-4 (.765)/3rd	17-4 (.810)/1st
2005-06	15-4 (.789)/3rd	7-6 (.538)/1st
TOTAL	38-13 (.745)	35-11 (.761)



The 2005-06 PSAC and NCAA East Regional Champion Men's Tennis Team. First Row (left to right): Radoslaw Hlubinski, Harsh Sharma, Lukas Labitsch, Sendhur Gautham, Lukas Beman. Second Row: Assistant Coach Brian Zansitis, Somdeep Appineni, Santiago Baquerizo, Jose Castro, Rubens Vianna, Head Coach Suresh Ramamurthi



The 2005-06 NCAA East Regional Champion Women's Tennis Team. First Row (left to right): Jharna Nansi, Gina Panichelli, Kerstin Kloeffler, Priya Pachkawde. Second Row: Assistant Coach Brian Zansitis, Magaly Peter, Lauren Losoncy, Kristen Bodalski, Tarin Shulze, Head Coach Suresh Ramamurthi

2005-06 Season Review - MEN



Final Men's Tennis Results/Records (Record: 14-3, 5-0 vs. PSAC*)

Fall								
10/1-3	at ITA Regionals (Bloomsburg)			4/17	at Concordia (NY)			L, 4-5
10/9	at *Slippery Rock	W, 5-0		4/21	(2) vs. Slippery Rock			W, 8-0
				4/23	(2) vs. Millersville			W, 5-0
				4/28-29	at PSAC Indiv. Championships			
Spring				5/4	(3) DOWLING			W, 5-1
3/12	(1) vs. Wayne State (MI)	W, 8-1		5/5	(3) QUEENS (NY)			W, 5-4
3/15	(1) vs. Southern Illinois	L, 3-4		5/11	(4) vs. St. Edwards (TX)			L, 0-5
3/16	(1) vs. Limestone	W, 7-2						
3/31	TEMPLE	W, 5-2		(1)	at Hilton Head, SC			
4/1	ADELPHI	W, 8-1		(2)	PSAC Championships at Shippensburg, PA (1st/4)			
4/4	*WEST CHESTER	W, 9-0		(3)	NCAA East Regional at Kutztown, PA (1st/4)			
4/10	*at Millersville	W, 9-0		(4)	NCAA Championship (tie-9th/16)			
4/12	*BLOOMSBURG	W, 9-0						
4/15	at East Stroudsburg	W, 8-1						

INDIVIDUAL RECORDS

SINGLES	1st	2nd	3rd	4th	5th	6th	Other#	Overall Record
Somdeep Appineni	-	-	2-0	9-1	4-2	-	1-2	16-5
Lukas Beman	-	-	-	2-1	7-2	2-2	0-1	11-6
Nickolas Gallagher	-	-	-	-	1-0	8-1	2-1	11-2
Matthew Gawrych	-	-	-	-	1-0	1-0	0-1	2-1
Radoslaw Hlubinski	-	3-2	8-1	-	-	-	1-1	12-4
Thomas Miller	-	-	-	-	-	1-0	-	1-0
Mukundan Nandakumar	8-2	7-0	-	-	-	-	1-1	16-2
Ilija Semjonovs	-	-	6-1	2-4	2-0	-	-	10-5
Harsh Sharma	5-3	8-0	-	-	-	-	4-1	17-4
Team ^	-	-	-	-	-	2-0	-	2-0
Totals	13-5	18-2	16-2	13-6	15-4	14-3	7-6	98-29

DOUBLES	1st	2nd	3rd	Other#	Overall Record
Appineni/Beman	-	2-0	-	1-1	3-1
Appineni/Gallagher	-	-	2-0	-	2-0
Appineni/Hlubinski	1-0	10-4	2-0	-	13-4
Appineni/Nandakumar	0-1	-	-	1-0	1-0
Beman/Gallagher	-	1-0-	-	-	1-0
Beman/Nandakumar	1-0	-	-	-	1-0
Beman/Semjonovs	-	2-2	12-1	-	14-3
Gallagher/Gawrych	-	-	0-1	1-1	1-2
Gallagher/Hlubinski	-	0-1	-	-	0-1
Gallagher/Nandakumar	-	-	1-0	-	1-0
Gawrych/Miller	-	-	1-0	-	1-0
Hlubinski/Sharma	1-0	-	-	2-1	3-1
Nandakumar/Sharma	16-1	-	-	-	16-1
Semjonovs/Sharma	1-0	-	-	-	1-0
Team ^	-	-	2-0	-	2-0
Totals	20-2	15-7	20-2	4-3	60-14

Tournaments ^ Defaults

2005-06 Season Review - WOMEN



Final Women's Tennis Results/Records (Record: 12-4, 3-1 vs. PSAC East*)

Fall				4/21	(2) vs. California (PA)	L, 4-5
9/17	at Indiana (PA)	W, 8-1		4/28-29	at PSAC Indiv. Championships	
9/20	SHIPPENSBURG	W, 9-0		5/5	(3) vs. California (PA)	W, 5-4
9/25-6	at ITA Regional (at Ship.)			5/6	(3) at Bryant	W, 5-2
10/9	at Slippery Rock	W, 5-2		5/10	(4) vs. Abilene Christian	L, 0-5
Spring						
3/13	(1) vs. Wayne State (MI)	W, 6-3		(1)	at Hilton Head, SC	
3/15	(1) vs. Denison	L, 3-6		(2)	PSAC Championships at Shippensburg, PA	
3/16	(1) vs. Limestone	W, 7-2			(t-3rd/4)	
4/1	ADELPHI	W, 7-2		(3)	NCAA East Regional at Bryant (1st/4)	
4/4	*WEST CHESTER	W, 8-1		(4)	NCAA Championship (tie-9th/16)	
4/9	*at Millersville	W, 8-1				
4/15	*at East Stroudsburg	W, 7-2				
4/19	QUEENS (NY)	W, 6-3				

INDIVIDUAL RECORDS

SINGLES	1st	2nd	3rd	4th	5th	6th	Other#	Overall Record
Meredith Barnes	-	-	-	-	1-0	0-1	-	1-1
Mindi Bell	-	-	-	-	-	1-0	-	1-0
Biance Blatz	-	-	-	0-2	2-0	1-1	-	3-3
Kristen Bodalski	-	-	1-1	-	3-1	7-0	0-1	11-3
Jolie Falkowski	-	-	-	1-1	-	-	1-1	2-2
Kerstin Kloeffler	11-1	-	-	-	-	-	-	11-1
Lauren Losoncy	-	-	3-0	5-0	4-0	-	1-1	13-1
Jharna Nansi	-	2-0	2-0	5-2	0-1	-	-	9-3
Priya Pachkawde	1-1	4-1	7-1	-	-	-	1-1	13-4
Jan Paletski	-	-	-	-	-	-	-	-
Vanessa Walsh	-	-	-	-	0-4	1-1	0-1	1-6
Any Withers	0-1	8-0	-	-	-	-	1-1	9-2
Team ^	-	-	-	-	-	2-1	-	2-1
Totals	12-3	14-1	13-2	11-5	10-6	12-4	4-7	75-28

DOUBLES	1st	2nd	3rd	Other#	Overall Record
Bell/Losoncy	-	-	2-0	-	2-0
Bell/Pachkawde	-	1-0	-	-	1-0
Blatz/Losoncy	-	-	4-5	-	4-5
Blatz/Nansi	-	2-1	-	-	2-1
Bodalski/Falkowski	0-1	-	-	-	0-1
Bodalski/Walsh	-	-	-	0-1	0-1
Kloeffler/Nansi	2-0	-	-	-	2-0
Kloeffler/Pachkawde	7-1	-	-	-	7-1
Kloeffler/Walsh	-	-	4-0	-	4-0
Losoncy/Walsh	-	-	4-0	-	4-0
Nansi/Walsh	-	0-1	-	-	0-1
Nansi/Withers	-	4-1	-	-	4-1
Nansi/Pachkawde	1-0	5-1	-	1-1	7-2
Paletski/Walsh	-	0-1	-	-	0-1
Pachkawde/Paletski	-	-	0-1	-	0-1
Pachkawde/Withers	-	1-0	-	1-0	2-0
Team ^	-	-	2-0	-	2-0
Totals	16-2	13-5	12-6	2-2	43-15

Tournaments

^ Defaults

Facilities



Kutztown University is blessed with some of the top athletic facilities among Division II colleges and universities in the Eastern United States. Twenty of KU's 21 teams have their home venues on campus.

Keystone Hall

The headquarters of the KU athletic department, Keystone Hall, is the hub of indoor athletic activity on campus. The 3,400-seat Keystone Arena, located in the center of Keystone Hall, is the home of the volleyball, men's and women's basketball and wrestling teams. Keystone Hall also houses the Golden Bear Sports Medicine department, designated locker rooms for all intercollegiate athletic teams, and a state-of-the-art fitness room. Additionally, it served as the site of a town meeting by President George W. Bush in 2004.

KU Courts

Golden Bear tennis players call the KU Courts home. Resurfaced over the summer of 2000, the KU Courts are comprised of seven regulation size playing areas. The courts are conveniently located near Keystone Hall's locker room and sports medicine facilities.



Risley Weight Room

Athletes get extensive use out of the free-weight room, located on the ground floor of Risley Hall, the original gym. The weight room was recently renovated and expanded.

Keystone Field House

Keystone Field House is home to the KU men's and women's indoor track teams, and has been the site of major eastern championships in recent years. The field house is used by all teams for indoor practice and overflow athletic events. It is also used for non-athletic events, such as President Clinton's address during his visit in January 1995.



Golden Bear Records



Season Records - MEN

Singles	<u>Wins</u>	<u>Year</u>
Michael Rohrbach	28	1997-98
Michael Rohrbach	23	1998-99
Michael Rohrbach	23	1999-00
Guillermo Ramos	22	2000-01
Tom Bixler	22	1996-97
Doubles (Player)	<u>Wins</u>	<u>Year</u>
Justin Poletti	25	1999-00
Michael Rohrbach	25	1999-00
Tom Bixler	23	1996-97
Alok Bhide	22	2002-03
Alok Bhide	22	2003-04
Doubles (Team)	<u>Wins</u>	<u>Year</u>
Justin Poletti/Michael Rohrbach	23	1999-00
Tom Bixler/Brett Deixler	19	1997-98
Velmurugan Annamalai/ Gustavo Boratto	18	2001-02
Alok Bhide/ Mukundan Nandakumar	17	2002-03
Alok Bhide/ Mukundan Nandakumar	17	2003-04
John Ruggiero/Brian Zansitis	17	1999-00
Combined Wins	<u>Wins</u>	<u>Year</u>
Michael Rohrbach	48	1999-00
Tom Bixler	45	1996-97
Michael Rohrbach	41	1998-99
Justin Poletti	41	1999-00
Several	39	

Career Records - MEN

Singles	<u>Wins</u>	<u>Years</u>
Michael Rohrbach	89	1996-00
Guillermo Ramos	69	1998-02
Gustavo Boratto	64	1998-02
Mukundan Nandakumar	63	2001-05
Tom Bixler	62	1996-99
Johannes Wingerter	62	2000-04
Doubles (Player)	<u>Wins</u>	<u>Years</u>
Mukundan Nandakumar	78	2001-05
Alok Bhide	73	2000-04
Tom Bixler	68	1996-99
Gustavo Boratto	67	1998-02
Velmurugan Annamalai	59	2000-04
Johannes Wingerter	59	2000-04
Doubles (Team)	<u>Wins</u>	<u>Years</u>
Alok Bhide/M. Nandakumar	37	2001-04
John Ruggiero/Brian Zansitis	37	1997-00
Tom Bixler/Brett Deixler	29	1996-98
Alok Bhide/Guillermo Ramos	24	2000-02
V. Annamalai/Gustavo Boratto	23	2000-02
Justin Poletti/Michael Rohrbach	23	1999-00
Combined Wins	<u>Wins</u>	<u>Years</u>
Mukundan Nandakumar	141	2001-05
Michael Rohrbach	141	1997-00
Tom Bixler	134	1996-99
Gustavo Boratto	131	1998-02
Alok Bhide	130	2000-04
Johannes Wingerter	121	2000-04
Velmurugan Annamalai	119	2000-04
Guillermo Ramos	119	1998-02

Season Records - WOMEN

Singles	<u>Wins</u>	<u>Year</u>
Magaly Peter	19	2005-06
Margo Ayers	19	1996-97
Meg Edwards	19	1996-97
Kerstin Kloeffler	18	2005-06
Lauren Kelly	18	1996-97
Doubles (Player)	<u>Wins</u>	<u>Year</u>
Jharna Nansi	20	2005-06
Magaly Peter	18	2005-06
<i>Priya Pachkawde</i>	17	2004-05
Margo Ayers	16	1995-96
Several	15	
Doubles (Team)	<u>Wins</u>	<u>Year</u>
Jharna Nansi/Magaly Peter	15	2005-06
Meredith Keller/Amy Sonon	14	1997-98
Margo Ayers/Meg Edwards	14	1996-97
Margo Ayers/Meg Edwards	13	1994-95
Combined Wins	<u>Wins</u>	<u>Year</u>
Magaly Peter	37	2005-06
Margo Ayers	33	1996-97
Meg Edwards	33	1996-97
Jharna Nansi	31	2005-06
<i>Priya Pachkawde</i>	30	2004-05

Career Records - WOMEN

Singles	<u>Wins</u>	<u>Years</u>
Margo Ayers	63	1994-98
Meg Edwards	61	1993-97
Lauren Kelly	45	1994-97
Doubles (Player)	<u>Wins</u>	<u>Years</u>
Margo Ayers	54	1994-98
Meg Edwards	49	1993-97
Jharna Nansi	48	2003-06
<i>Priya Pachkawde</i>	40	2003-
Katie Rohrbach	36	2000-04
Doubles (Team)	<u>Wins</u>	<u>Years</u>
Margo Ayers/Meg Edwards	28	1994-97
Brandi Kauffman/ Sarah McDowell	27	1991-94
Combined Wins	<u>Wins</u>	<u>Years</u>
Margo Ayers	117	1994-98
Meg Edwards	110	1993-97
<i>Priya Pachkawde</i>	78	2003-
Lauren Kelly	78	1994-97

Golden Bear History



PSAC Honors - MEN

All-PSAC 1st Team

2001-Guillermo Ramos,
Alok Bhide
2002-Mukundan Nandakumar, Johannes Wingerter
2003-Velmurugan Annamalai, Alok Bhide,
Mukundan Nandakumar,
Johannes Wingerter
2004-Alok Bhide, Mukundan Nandakumar,
Johannes Wingerter
2005-Radoslaw Hlubinski,
Mukundan Nandakumar,
Harsh Sharma
All-PSAC 2nd Team
2001-Velmurugan Annamalai
2002-Alok Bhide, Velmurugan Annamalai
2004-Velmurugan Annamalai, Lukas Beman,
Radoslaw Hlubinski
2005-Somdeep Appineni,
Ilja Semjonovs
All-PSAC Singles
2006-Harsh Sharma,
Sanitago Baquerizo,
Radoslaw Hlubinski
All-PSAC Doubles
2006-Harsh Sharma/Lukas Labitsch
Athlete of the Year
2003-Johannes Wingerter
2005-Mukundan Nandakumar
2006-Harsh Sharma

Tournament MVP

2000-Michael Rohrbach
2001-Guillermo Ramos
2002-Gustavo Boratto
2004-Alok Bhide
2005-Radoslaw Hlubinski
2006-Lukas Labitsch
Rookie of the Year
2002-Mukundan Nandakumar
2003-Radoslaw Hlubinski
2006-Santiago Baquerizo
Coach of the Year
2002-Suresh Ramamurthi
Champions
1998-John Ruggiero
1998-99, Michael Rohrbach (6th singles),
Ruggiero/Zansitis (3rd doubles)
1999-Boratto/Mazaia (3rd doubles)
2000-Guillermo Ramos (3rd singles), Michael Rohrbach (5th singles),
Ruggiero/Zansitis (1st doubles), Poletti/Rohrbach (3rd doubles)
2004-Mukundan Nandakumar (singles), Alok Bhide/
Mukundan Nandakumar (doubles)
2006-Sanitago Baquerizo (singles), Somdeep Appineni/Rubens Vianna (doubles)

PSAC Honors - WOMEN

All-PSAC/East 1st Team

2004-Kerstin Kloeffler
2005-Kerstin Kloeffler, Jharna Nansi, Amy Withers
All-PSAC/East 2nd Team
2002-Tara Deen Moore
2004-Jharna Nansi, Priya Pachkawde
All-PSAC East Singles
2006-Magaly Peter, Kerstin Kloeffler
All-PSAC Doubles
2006-Magaly Peter/Jharna Nansi, Kerstin Kloeffler/
Priya Pachkawde

Athlete of the Year

2005-Kerstin Kloeffler
2006-Magaly Peter
Rookie of the Year
2005-Amy Withers
2006-Magaly Peter
Champions
1993-Meg Edwards (6th singles)
1994-Lauren Kelly (6th singles)
2006-Magaly Peter/Jharna Nansi (Doubles)

Year-by-Year - MEN

Year	Coach	Overall Record	PSAC* Place
1985	Zellner	1-7	10th
1986	Zellner	0-10	8th
1987	Zellner	1-9	9th
1988	Zellner	5-4	11th
1989	Holt	2-4	9th
1990	Holt	5-4	T-11th
1991	Wolff	2-4	9th
1992	Wolff	5-5	8th
1993	Rowan	10-5	6th
1994	Rowan	10-11	5th
1995	Rowan	7-15	5th
1996	Rowan	7-10-1	3rd
1996-97	Rowan	14-5	4th
1997-98	Rowan	14-10	2nd
1998-99	Eastridge	13-8	3rd
1999-00	Ramamurthi	17-6	t-1st
2000-01	Ramamurthi	13-5	1st
2001-02	Ramamurthi	15-2	1st
2002-03	Ramamurthi	17-5	2nd
2003-04	Ramamurthi	16-5	1st
2004-05	Ramamurthi	20-2	1st
2005-06	Ramamurthi	14-3	1st

Year-by-Year - WOMEN

Year	Coach	Overall Record	PSAC* Place
1975	Kantner	1-7	
1976	Kantner	4-6	
1977	Kantner	5-5	
1978	Kantner	6-4	
1979	Kantner	3-6	
1980	Kantner	2-3	
1981	Kantner	3-2	
1982	Kantner	n/a	
1983	Kantner	n/a	
1984	Skindeleski	1-5	11th
1985	Skindeleski	4-4	10th
1986	O'Connell	5-4	10th
1987	O'Connell	5-3	6th
1988	O'Connell	5-5	7th
1990	O'Connell	5-6	t-9th
1991	Wolff	8-3	t-6th
1992	Wolff	9-3	4th
1993	Wolff	11-3	2nd
1994	Wolff	11-3	5th
1995-96	Rowan	10-8-1	t-4th
1996-97	Rowan	15-8	4th
1997-98	Rowan	11-4	t-3rd
1998-99	Eastridge	6-11	8th
1999-00	Ramamurthi	2-13	8th
2000-01	Ramamurthi	4-18	t-6th
2001-02	Ramamurthi	7-14	t-5th
2002-03	Ramamurthi	4-13	11th
2003-04	Ramamurthi	10-8	
2004-05	Ramamurthi	14-3	2nd
2005-06	Ramamurthi	12-4	t-3rd

*PSAC Championship Tournament place

Note: Men's tennis began playing fall-spring schedules in 1996-97. Women's tennis began playing fall-spring schedules in 1995-96.



photo by KU university relations

The brand new, 64,623 square foot student recreation center opened in the fall of 2006. The facility, located between Keystone Hall and University Field, is THE place to be for student recreation and fitness on campus. Among the amenities are a nearly 9,000 sq. ft. fitness center and weight room, two group fitness studios, two

racquetball courts, an indoor rock climbing wall, a synthetic surface gymnasium with curved walls for indoor sports, a synthetic surface half gymnasium, a suspended jogging track (approx. 1/10 mile), an office suite for recreational services staff, a meeting room, retail space/snack bar and locker rooms with jacuzzis.

2005-06 Dixon Trophy



photo by KU sports information

For the first time in school history, Kutztown University is the winner of the Pennsylvania State Athletic Conference's (PSAC) Dixon Trophy for the 2005-06 academic year. The trophy is presented annually to the league's most successful all-around program.

The Dixon Trophy is named after F. Eugene Dixon, Jr., former chairman of the Board of Governors of Pennsylvania's State System of Higher Education. It is awarded annually to the PSAC member institution that accumulates the most points based on results of conference playoffs and/or regular-season records. Each institution's point total is calculated by adding

its top six men's finishes and top six women's finishes in 21 conference sports.

Kutztown, the runner-up the past two years, totaled 140 points, edging Shippensburg by one and a half points.

Pictured above are several representatives of Kutztown University's athletic teams accepting the Dixon Trophy at a presentation in September. On hand to present the trophy to KU's coaches and athletes were President F. Javier Cevallos (far left), Vice President for Student Services and Campus Life Chick Woodard (front, third from right) and Director of Athletics Greg Bamberger (far right).



Academics & Athletics at KU

The **KU Academic Success Initiative**, when fully implemented by the coaching staff, provides the appropriate support, incentive, and opportunity for students to make a similar effort toward their academic success as made toward their athletic performance. The Initiative is based on the expectation that both individual and team academic performance will be at or above the level of the overall student body. This expectation is built into the evaluation of coaches and is an integral part of the process of awarding athletic scholarships. KU provides athletic scholarships to support the academic pursuits of its student-athletes. Student-athletes are expected to participate in sports because they love to do so.

Continuing indications reveal that the Initiative works and is having a profound and measurable effect on both academic and athletic performance. Over the past 11 years, KU's freshman class of student-athletes has had a significantly higher grade-point average than the overall freshman class. In 2005-06, KU's student-athletes achieved a cumulative grade-point average of 2.84, the second highest in school history. Also, 94 Golden Bears were recognized as Pennsylvania State Athletic Conference (PSAC) Scholar Athletes.

The **KU Academic Success Initiative** contains the following components:

The Monitoring of Progress: The academic progress of student-athletes is continually tracked and monitored.

Course Selection and Registration: In order to avoid unnecessary conflicts between athletic events and classes, student-athletes are provided a registration date earlier than the rest of the campus student population. Registration is now done online via the Internet. Students can go online at any time to view their schedule, grades, transcript, financial aid, payments, charges and restrictions on their account.

Academic Coaching: This year-long program is based on one-on-one personal contacts between the coach and the student-athlete.

Faculty Advising: This is an essential part of the college experience and is often a major factor in the ultimate academic success of students. Advisor meetings are required in order to register for classes.

Pre-Season Academic Seminars: During pre-season camps and/or the first week of classes, athletes may participate in seminars addressing topics such as time management, study skills, class participation, student/faculty relationships and test-taking strategies.

Career Services Visit For Undeclared Majors: Incoming students who have not yet declared a major or who may be unsure of their chosen major are highly encouraged to visit the Career Services Office.

Referrals For Services to the Department of Developmental Studies: Student-athletes are strongly encouraged to make use of the Department of Developmental Studies' services in regard to tutoring or other needs

for specialized instruction.

Referrals For Services to the Counseling and Advisement Center: Trained counselors/faculty advisors are available to help with psychological/academic counseling/advisement issues.

Library Tour: A library tour is highly recommended of all incoming student-athletes.

Personal Computer: Each student-athlete is strongly encouraged to have access to a networked personal computer.

Academic Accomplishment Recognition

The Department of Athletics has developed a comprehensive program to provide incentive for and acknowledgement of the many academic accomplishments of its student-athletes. Below are some examples of the program.

Graduation Reception: The athletic department hosts a reception for graduating student-athletes and their families at the winter and spring commencement ceremonies to recognize the culmination of student-athletes' education at Kutztown University.

Awards and Honors: KU offers specific academic scholarships available only to student-athletes. KU student-athletes are nominated for all available NCAA, PSAC and CoSIDA awards.

Scholar-Athlete Banquet: Each year, the PSAC Scholar-Athletes are recognized at a banquet in their honor.

Dean's List Ceremony: All Kutztown University student-athlete dean's list recipients are acknowledged at a basketball game every year.

2007

Kutztown University Tennis Schedule

WOMEN'S

MARCH

MON	12	(1) vs. Charleston (WV)	TBA
THU	15	(1) vs. Colgate	TBA
THU	29	*at West Chester	3:30 PM
FRI	30	SLIPPERY ROCK	3:30 PM

APRIL

TUE	3	*MILLERSVILLE	3:30 PM
TUE	10	*at Bloomsburg	3:00 PM
WED	11	*EAST STROUDSBURG	3:30 PM
SAT	14	at Queens (NY)	TBA
FRI	20	+PSAC Team Championship	TBA
-SAT	21	(at Bloomsburg)	

MAY

THU	3	+NCAA East Regionals	TBA
-FRI	4	(site TBA)	
WED	9	+NCAA Championships	TBA
-SAT	12	(Altamonte, FL)	

MEN'S

MARCH

MON	12	(1) vs. Charleston (WV)	TBA
WED	14	at Armstrong Atlantic State	TBA
THU	15	(1) vs. Colgate	TBA
TUE	27	PHILADELPHIA	3:30 PM
THU	29	*at West Chester	3:30 PM
FRI	30	*SLIPPERY ROCK	3:30 PM

APRIL

TUE	3	*MILLERSVILLE	3:30 PM
FRI	6	MERCY	3:30 PM
TUE	10	*at Bloomsburg	3:00 PM
WED	11	*EAST STROUDSBURG	3:30 PM
SAT	14	at Queens (NY)	TBA
MON	16	CONCORDIA (NY)	3:30 PM
FRI	20	+PSAC Team Championship	TBA
-SAT	21	(at Bloomsburg)	

MAY

THU	3	+NCAA East Regionals	TBA
-FRI	4	(site TBA)	
WED	9	+NCAA Championships	TBA
-SAT	12	(Altamonte, FL)	

Home events in **BOLD CAPS**

* PSAC (M)/PSAC East (W) matches

+ if team qualifies

(1) at Hilton Head, SC