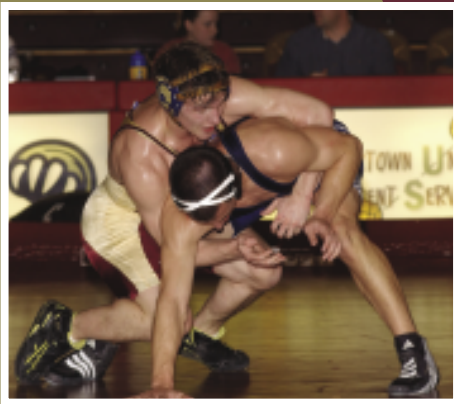


KUTZTOWN

U N I V E R S I T Y



2006-
2007

WRESTLING



A Look at Kutztown University of Pennsylvania

History:

Kutztown University of Pennsylvania, a member of the Pennsylvania State System of Higher Education, was founded in 1866 as Keystone Normal School. It became Kutztown State Teachers College in 1928, Kutztown State College in 1960, and achieved university status in 1983. Today, Kutztown University is a modern, comprehensive institution and is accredited by the Middle States Association of Colleges and Secondary Schools.

Location:

Kutztown University's picturesque 325-acre campus is located in a Pennsylvania Dutch community mid-way between Allentown and Reading. Several large cities are easily accessible, including Philadelphia and New York.

Enrollment:

Approximately 10,000 full- and part-time undergraduate and graduate students. Most are Pennsylvania residents, but students from 24 states and 38 nations are represented in the student body: 60% women, 40% men.

Academic Year:

Consists of two 15-week terms. The university also offers classes during two five-week summer sessions.

Faculty:

Teaching-focused with scholarly expertise; many are engaged in research, student/faculty research, writing and consulting. There is a 19:1 student/faculty ratio.

Majors/Degrees:

KU has nearly 60 undergraduate majors in the Colleges of Liberal Arts and Sciences, Visual and Performing Arts, Business, and Education. There are 19 graduate degree programs within the College of Graduate Studies and Extended Learning. Degrees at Kutztown include the B.A., B.F.A., B.S.B.A., B.S.N., B.S.W., B.S.Ed.; M.A., M.B.A., M.P.A., M.L.S., M.S., and M.Ed.

Special Academic Programs:

There are honors programs throughout the undergraduate curriculum, Phi Kappa Phi and Alpha Epsilon Lambda national honor societies, 17 international exchange and study abroad programs, freshmen seminars, independent study, internships, four MBA locations, and diversified and intensive academic support services.

Library:

Modern, spacious facility; 517,000 bound volumes, as well as thousands of maps, periodicals and microforms; Endeavor integrated library system; numerous Web databases; Internet; electronic full-text periodical databases; 191 computers, including laptops; 527 network connections; seating for 800 patrons.

Special Facilities:

Wireless campus, gallery, planetarium, observatory, TV production facilities, 30 student-accessible computer labs containing nearly 500 PCs/Macs, cartography lab, early learning center, smart classrooms, curriculum materials center and Pennsylvania German Heritage Center.

Student Life:

Nearly 200 student organizations include: academic, advisory councils, campus media (including a fully-equipped radio station and student newspaper), diversified interest, Greek Life, performing arts, public service, special interest, sports (club and recreation) and visual arts affiliates. Entertainment options include concerts, dances, lectures, comedy, excursions and cultural events. The McFarland Student Union houses the bookstore, movie theater, game room, snack bar, TV lounge, coffeehouse, financial center and cyberlounge.

Residence Halls:

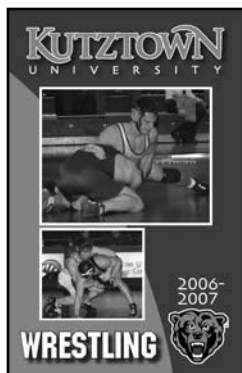
Ten residence halls (6 coed, 2 single gender, 2 modified single gender), two apartment-style coed complexes and one residence house accommodate 4,434 students. All residence halls are wired for cable TV, telephone, Internet and campus network access.

In accordance with the Equity in Athletics Disclosure Act of 1994 (section 360B of Pub. L. 130-382), the Kutztown University Athletic Department has made information concerning its intercollegiate athletics programs available to the public. This information is on file at Rohrbach Library and the athletic department main office. Questions can be directed to the athletics office, (610) 683-4094. Kutztown University is committed to Affirmative Action, equal employment and educational opportunity in compliance with Title VI and VII of the Civil Rights Act of 1964, Executive Order 11246, the Educational Amendments under Title IX of 1972, Sections 503/504 of the Rehabilitation Act of 1973, and the Americans with Disabilities Act of 1990.



Table of Contents

A look at KUInside Front Cover
 Head Coach Robert Fisher 2
 Assistant Coaches 2-3
 2006-07 Outlook 3
 Golden Bear Profiles 4-7
 2005-06 Season Review 8
 Facilities 9
 Athletic Honors 10
 Records/History 11
 Student Recreation Center 12
 2005-06 Dixon Trophy 12
 Academics & Athletics 13
 Schedule Back Cover



On the Cover

On the cover of the 2006-07 Wrestling Media Guide are (from top to bottom):
 Kevin Kalbach, Chris Chambers

For additional information, contact:

KU Sports Information Office:

(610) 683-4182

KU Athletics Department:

(610) 683-4094

Email: athletics@kutztown.edu

Kutztown University of Pennsylvania is a member of the State System of Higher Education.

The 2006-07

Kutztown University Wrestling Media Guide

is a production of the Kutztown University Sports Information Office. It was written and produced by Jill Wentzel, Sports Information Graduate Assistant and edited by Josh Leiboff, Sports Information Coordinator. Photography by Jeff Unger, Unger Studios (unless otherwise noted).

University Quick Facts

| | |
|------------------------------------|------------------------------|
| Location | Kutztown, PA 19530 |
| Enrollment | 10,000 |
| President | Dr. F. Javier Cevallos |
| Director of Athletics | Greg Bamberger |
| Associate AD | Michelle Gober |
| Athletics Phone | (610) 683-4094 |
| Nickname | Golden Bears |
| Colors | Maroon & Gold |
| Affiliation | NCAA Division II |
| Conference | PA State Athletic (PSAC) |
| Sports Medicine | Rennie Sacco & Jack Entriken |
| Sports Information | Josh Leiboff |
| Phone | (610) 683-4182 |
| Email | leiboff@kutztown.edu |
| Graduate Assistant | Jill Wentzel |

Wrestling Facts

| | |
|---|------------------------------------|
| Head Coach | Robert Fisher |
| Alma Mater | Kutztown '95 |
| Career Record (Yrs) | 60-34 (7th) |
| Record At KU (Yrs) | 60-34 (7th) |
| Phone | (610) 683-1536 |
| Email | rfisher@kutztown.edu |
| Assistant Coaches | Dan Hinkel, Justin Kast, Seth Lisa |
| 2005-06 Overall Record | 9-7 |
| PSAC Finish | 6th/9 |
| NCAA Reg. Finish | 6th/12 |
| NCAA Div. II Finish | 27th/32 |
| Home Arena | Keystone Arena |
| Capacity | 3,400 |
| Letterwinners Returning/Lost | 11/14 |
| Starters Returning/Lost | 4/6 |



Head Coach Rob Fisher

Rob Fisher enters his seventh season as head coach of the wrestling program at Kutztown University.

Fisher's teams have posted winning records in all six of his seasons as head coach. Last season, Fisher's squad went 9-7 with a school-record five who advanced to the NCAA Championships. KU also had six Pennsylvania State Athletic Conference (PSAC) medalists. In 2005, Kutztown finished 10-2 with seven NCAA Regional place-winners. In 2004, KU finished 8-7. Kutztown had six regional place-winners and four PSAC medalists. The 2003 Golden Bears finished 9-7, with one All-America and three regional place-winners. In 2002, two of his wrestlers earned All-America honors, six were regional place-winners and seven earned places at the PSAC

championships as the team tallied a record-tying 15-4 dual-meet mark.

Fisher's grapplers were 9-7 in dual meets in 2000-01, KU's first winning season since 1995-96. That year, he coached one All-American, one National Wrestling Coaches Association (NWCA) Academic team selection and two PSAC Scholar-Athletes. He also guided 125-pounder Brian Burzynski to a third-place finish at the Division I dominated PSAC Championships in 2001, the highest finish by a Golden Bear since 1978.

Fisher served as assistant coach with the Golden Bears from 1990-2000. He has been a key to Kutztown's strong regional and national performances during his tenure. He assisted in the preparation and execution of practice sessions, the organization and oversight of weight training and conditioning, and the recruitment of potential student-athletes. He also assisted with conducting wrestling camps and clinics.

Prior to coming to Kutztown, Fisher served as assistant coach at his alma mater, Hazleton High School, from 1987-90. Fisher was a two-time district wrestling champion at Hazleton and a three-time northeast regional runner-up. He captured the District 11 championship and went on to win the District 2 championship when Hazleton changed districts. He still holds the record for the most wrestling wins in school history. A two-sport athlete, he was also a member of the 1984 Big 33 Football Team.

Fisher received his bachelor's degree in special education for the visually impaired from Kutztown in 1995. He went on to serve as a teacher of the blind/visually impaired at the Capital Area Intermediate Unit, in Summerdale, PA, from 1996-99.



Assistant Coach Justin Kast

Justin Kast enters his third season on the coaching staff, first as assistant coach. Kast spent the past two seasons as the graduate assistant coach.

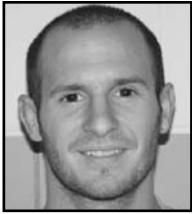
A 2003 Penn State graduate, Kast was a two-time letterwinner on the Nittany Lions' wrestling squad at 125 pounds. The Easton native brings a year of coaching experience from Pen Argyl High School.

Kast received his bachelor's in civil engineering and is pursuing a master's in secondary education/math at KU.



Assistant Coach Dan Hinkel

Dan Hinkel has been a key part of the Golden Bear wrestling program since 1964. Hinkel served two stints as head coach, between which and since he served as assistant coach to five different head coaches. He recorded over 100 career dual meet victories as head coach, while numerous grapplers qualified for the NCAA Championships under his tutelage. Hinkel stepped down as head coach in 1996, but remains an active member of the coaching staff. In 2003, Hinkel was inducted into the KU Athletics Hall of Fame and is also a member of the PSAC Wrestling and Lock Haven University halls of fame.



Graduate Assistant Coach Seth Lisa

Seth Lisa enters his first season on the coaching staff.

Lisa, a native of Northampton, is a graduate of West Virginia University. He was a four year starter, two-time Division I qualifier and was nationally ranked at 133 lbs. He served as co-captain his senior year.

Lisa received his bachelor's in athletic coaching education and will pursue a master's in secondary education/history at Kutztown.

KU Wrestlers Ready to Hit the Mat for 2006-07 Season

Kutztown University enters the 2006-07 season with several wrestlers who should compete for a trip to the NCAA Championships at Nebraska-Kearny at the end of the year, according to seventh-year head coach **Robert Fisher**.

The Golden Bears finished 9-7 in dual meets a year ago. KU had a record five NCAA qualifiers, however only two of them return for this season, sophomore **Chris Chambers** at 149 and senior **Kevin Kalbach** at 157. Despite the need to replace six total starters, Kutztown is poised to make some noise in the NCAA Division II East Region. KU boasts some key transfers, a strong sophomore class ready to step up, and a number of freshmen who will look to fill the vacated positions.

The following is the outlook for the 2006-07 season by weight class:

125 – Sophomore **Tye Wagner (Hillsborough, NJ/Hillsborough)** is slated to start at 125 this season. Wagner comes to Kutztown after transferring from the University of Wyoming, where he was 5-15 in 2004-05. Fisher expects Wagner to compete for a berth to the NCAA Championships when he hits the mat for the second semester. 2005-06 starter, **Cory Weiss**, also returns and will likely start in the first half of the season. **Chris Wieller (Bath/Northampton)** will provide depth.

133 – Junior **Joe Kemmerer (Mountain-top/Crestwood)** will start at 133. Kemmerer comes to Kutztown after transferring from UNC-Greensboro, where he started in 2004-05. He recorded a 31-7 overall record and qualified for the NCAA Division I Championship. Kemmerer was a state champion as a senior at Crestwood, capping an undefeated season. Wieller will also backup this weight class.

141 – **Brett Martinez** returns as the starter at 141. Last season, Martinez finished 15-14 with two pins and four major decisions.

149 – **Chambers** returns for his sophomore season, starting at 149. Last season,

he was 19-17, with four falls and two major decisions. He was the runner up at the East Regional, earning his first bid to the national championships. Senior **James Michaud** will look for mat time at 149.

157 – **Kalbach** returns to the starting position at 157, after getting his first national bid last year. He is ranked #7 at 157 in Division II entering the 2006-07 season. He finished 18-7 last year, with one pin and two technical falls. Kalbach was the 157 lb. runner up at the NCAA East Regionals. Michaud will also provide depth at 157.

165 – The starting role at 165 will be a heated battle this season. Sophomore **Brett Wandler** and redshirt-freshman **Troy Wasser** will vie for the nod along with newcomer **Eric Bauder (Emmaus/Emmaus)**. Wandler redshirted last year after turning in a 5-4 record in 2004-05. Bauder was a District II champion and two-time state qualifier at Emmaus. Sophomore **Sonny Flood** and freshman **Andrew Osbourne (Philadelphia/Milton Hershey)** should also be in the mix.

174 – Sophomore **Curtis Beardsell** will start at 174 this season. Beardsell drops down from 197, where he was 11-20 with four pins last year as the starter. Flood, Bauder and Osbourne will also provide depth at 174.

184 – Senior **Roy Gecelosky** will step up to the mat at 184 this season. Gecelosky wrestled at 174 last season and was 9-6. The same trio of Flood, Bauder and Osbourne will backup Gecelosky.

197 – Redshirt freshman **Kyle Davis (Peckville/Valley View)** is slated to start at 197 this year. A transfer from Division I Lock Haven, Davis was a four-time PIAA state medalist and district champion. Fisher expects Davis to vie for a national bid.

285 – Newcomers **Jack Lee (Morrisville/Pennsbury)** and **Richard Dalmás (Mountaintop/Crestwood)** will battle for the starting heavyweight spot.



Curtis Beardsell

SOPHOMORE - 174/184 - Warminster/William Tennent HS

Major: Business Management

Highlights: *2005-06* - Sixth at the PSAC Championships...first at Kutztown Invitational.

Notes: Slated to start at 174.

| CAREER STATS | | OVERALL | | PSAC | EAST REGIONAL |
|--------------|------|---------|----|--------|---------------|
| YEAR | LBS. | W | L | FINISH | FINISH |
| 2005-06 | 197 | 11 | 20 | - | - |



Spenser Beck

SOPHOMORE - 165 - Northampton/Northampton HS

Major: Business

Notes: Wrestled at 157 in four matches last season....will look for mat time at 165 lbs. this season.

| CAREER STATS | | OVERALL | | PSAC | EAST REGIONAL |
|--------------|------|---------|---|--------|---------------|
| YEAR | LBS. | W | L | FINISH | FINISH |
| 2005-06 | 157 | 2 | 2 | - | - |

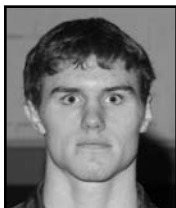


Steve Brynildsen

REDSHIRT FRESHMAN - 174 - Emmaus/Emmaus HS

Major: Undeclared

Notes: Redshirted the 2005-06 season.



Chris Chambers

SOPHOMORE - 149 - Holland/Council Rock South HS

Major: Undeclared

Highlights: *2005-06* - Second at East Regionals to qualify for NCAA Championships...third at Kutztown Invitational...fourth at PSAC Championships...19 wins.

Notes: Will start at 149...will contend for second national bid.

| CAREER STATS | | OVERALL | | PSAC | EAST REGIONAL |
|--------------|------|---------|----|--------|---------------|
| YEAR | LBS. | W | L | FINISH | FINISH |
| 2005-06 | 149 | 19 | 17 | 4th | 2nd |



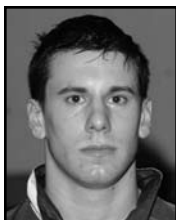
Sonny Flood

SOPHOMORE - 165 - Southampton/William Tennent HS

Major: Business

Notes: Wrestled in one match last season...will battle for mat time at 165.

| CAREER STATS | | OVERALL | | PSAC | EAST REGIONAL |
|--------------|------|---------|---|--------|---------------|
| YEAR | LBS. | W | L | FINISH | FINISH |
| 2005-06 | 165 | 0 | 1 | - | - |



Roy Gecelosky

SENIOR - 174/184 - Annville/Palmyra HS

Major: Geology

Highlights: **2003-04** - Fifth at NCAA East Regional at 174, narrowly missing NCAA berth...posted 14 overall wins between 165, 174 and 184 pounds...8-5 mark in dual meets...four wins by fall and one by technical fall...sixth at KU Invitational at 165; **2004-05** - finished the season with 10 wins, 4-1 in dual meets...finished 5th at the KU Invitational and 6th at PSACs...one pin; **2005-06** - fifth at KU Invitational...one pin...three major decisions.

Notes: Slated to start at 184.

| CAREER STATS | | OVERALL | | PSAC | EAST REGIONAL |
|--------------|-------------|-----------|-----------|--------|---------------|
| YEAR | LBS. | W | L | FINISH | FINISH |
| 2003-04 | 165/174/184 | 14 | 13 | - | 5th |
| 2004-05 | 174/184 | 10 | 11 | 6th | - |
| 2005-06 | 174/184 | 9 | 6 | - | - |
| Total | - | 33 | 30 | - | - |



Kevin Kalbach

SENIOR - 157 - Downingtown/Downingtown HS

Major: Secondary Education - English

Highlights: **2003-04** - Split time between 157 and 165 pounds...fourth at KU Invitational; **2004-05** - second at KU Invitational...finished with 17 wins, 6-3 in dual meets...sixth at NCAA East Regional, one pin, three major decisions; **2005-06** - first at KU Invitational, second at NCAA East Regionals...first national bid...18 wins...one pin.

Notes: Starting role at 157...will contend for another national bid.

| CAREER STATS | | OVERALL | | PSAC | EAST REGIONAL |
|--------------|---------|-----------|-----------|--------|---------------|
| YEAR | LBS. | W | L | FINISH | FINISH |
| 2003-04 | 157/165 | 7 | 8 | - | - |
| 2004-05 | 165 | 17 | 15 | - | 6th |
| 2005-06 | 157 | 18 | 7 | - | 2nd |
| Total | - | 42 | 30 | - | - |



Charles Kolb

JUNIOR - 141 - Easton/Easton HS

Major: Elementary Education

Notes: Wrestled in six matches last season.

| CAREER STATS | | OVERALL | | PSAC | EAST REGIONAL |
|--------------|------|---------|---|--------|---------------|
| YEAR | LBS. | W | L | FINISH | FINISH |
| 2005-06 | 141 | 0 | 6 | - | - |



Brett Martinez

SOPHOMORE - 141 - Slatington/Northern Lehigh HS

Major: Criminal Justice

Highlights: *2005-06* - First at the Kutztown Invitational...sixth at PSAC Championships...15 wins.

Notes: Will start at 141.

| CAREER STATS | | OVERALL | | PSAC | EAST REGIONAL |
|--------------|------|---------|----|--------|---------------|
| YEAR | LBS. | W | L | FINISH | FINISH |
| 2005-06 | 141 | 15 | 14 | 6th | - |



Brett Wandler

JUNIOR- 157 - Northampton/Northampton HS

Major: Secondary Education - History

Notes: Will look for time at 165...redshirted last season.

| CAREER STATS | | OVERALL | | PSAC | EAST REGIONAL |
|--------------|------|---------|---|--------|---------------|
| YEAR | LBS. | W | L | FINISH | FINISH |
| 2004-05 | 157 | 5 | 4 | - | - |



Troy Wasser

REDSHIRT-FRESHMAN - 165

Northampton/Northampton HS

Major: Business-Marketing

Notes: Will compete for the starting spot at 165 lbs...brother of former Golden Bear standout Ryan Wasser.



Cory Weiss

SOPHOMORE - 125 - Gilberstville/St. Pius X HS

Major: Geography

Notes: Started at 125 as a freshman.

| CAREER STATS | | OVERALL | | PSAC | EAST REGIONAL |
|--------------|------|---------|----|--------|---------------|
| YEAR | LBS. | W | L | FINISH | FINISH |
| 2005-06 | 125 | 2 | 24 | - | - |



Top Newcomers

Eric Bauder

FRESHMAN - 165/174

Emmaus/Emmaus HS

Major: Leisure & Sport Studies

Kyle Davis

REDSHIRT-FRESHMAN - 197

Peckville/Valley View HS

Major: Elementary Education

Notes: Slated to start at 197...transferred to KU from Division I Lock Haven.

Joe Kemmerer

JUNIOR - 133

Mountaintop/Crestwood HS

Major: Psychology

Notes: Slated to start at 133..transfer from UNC-Greensboro, where he was a Division I NCAA qualifier in 2004-05...won 31 matches for the Spartans that season.

Jack Lee

FRESHMAN - 285

Morrisville/Pennsbury HS

Major: Secondary Education - Biology

Notes: Expected to battle for starting spot at 285 lbs.

Andrew Osbourne

FRESHMAN - 165/174

Philadelphia/Milton Hershey HS

Major: Psychology

Tye Wagner

SOPHOMORE - 125

Hillsborough, NJ/Hillsborough HS

Major: Anthropology

Notes: Slated to start at 125 when he joins the team in the spring semester...transfer from the University of Wyoming.

David Zeek

FRESHMAN - 149/157

Newtown/Council Rock North HS

Major: Undeclared





Final Record: 9-7

| | | |
|-------------|---|--|
| <i>Date</i> | <i>Opponent/Tournament - result (placewinners)</i> | 1/15 at Wilkes - L, 21-25 |
| 11/12 | at Montclair State - L, 17-26 | 1/14 (2) vs. Limestone - W, 33-12 |
| 11/18 | (1) vs. Western State - L, 3-33 | (2) vs. W. Liberty St. - L, 15-20 |
| | (1) vs. Montana State-Northern - L, 18-22 | 1/15 (2) vs. Gannon - W, 19-16 |
| | (1) at Colorado Mines - W, 29-15 | 1/28-9 at PSAC Championships – 6th/9 (4th-Clemmer, Chambers; 6th-Martinez, Wasser, Wade, Beardsell) |
| 11/23 | KU Invitational - 1st/8 (1st-Stenack, Martinez, Sabia, Kalbach, Shaffer, Wasser, Wade, Beardsell; 2nd-Horlick; 3rd-Clemmer, Chambers, Kershaw; 5th-Gecelosky; 6th-Beck) | 2/1 ELIZABETHTOWN - W, 45-4 |
| | | 2/10 YORK - L, 13-26 |
| | | 2/15 SHIPPENSBURG - W, 22-19 |
| | | 2/16 BLOOMSBURG - W, 48-0 |
| 12/4 | at Penn State Open - ind. comp. (4th - Wasser) | 2/25-6 NCAA EAST REGIONALS- 6th/10 (2nd-Chambers, Kalbach; 3rd-Clemmer; 4th-Wade, Freas; 6th-Wasser) |
| 12/28 | at Wilkes Open - indiv. Comp. (4th - Clemmer, Wasser) | 3/11 at NCAA Championships - 27th/32 |
| 1/4 | MESSIAH - W, 26-15 | (1) at Colorado Mines Invitational |
| 1/6 | at Pitt-Johnstown - L, 0-37 | (2) East Coast Duals (Shippensburg, PA) |
| 1/10 | MILLERSVILLE - W, 18-16 | Home meets in CAPS |

| Individual Wrestler | Primary Weight | All Matches | Duals Only | Fastest Fall | Falls | Maj. Dec. | MT/TF |
|----------------------------|-----------------------|--------------------|-------------------|---------------------|--------------|------------------|--------------|
| Curtis Beardsell | 197 | 11-20 | 5-11 | 0:32 | 4 | | |
| Spencer Beck | 157 | 2-2 | | 4:40 | 1 | 1 | |
| Chris Chambers | 149 | 19-17 | 6-9 | 1:00 | 4 | 2 | |
| Brandon Clemmer | 133 | 24-13 | 10-5 | 0:24 | 8 | 2 | 1 |
| Jarod Fisher | 149 | 2-7 | 1-2 | | | | |
| Sonny Flood | 165 | 0-1 | | | | | |
| Andrew Freas | 285 | 12-10 | 10-4 | 2:13 | 3 | 1 | |
| Roy Gecelosky | 174 | 9-6 | 4-2 | 4:55 | 1 | 3 | |
| Brandon Horlick | 165 | 2-4 | | | | | |
| Kevin Kalbach | 157 | 18-7 | 12-2 | 2:45 | 1 | 2 | 2 |
| Kim Kershaw | 197 | 5-5 | 1-1 | 4:41 | 2 | | |
| Charles Kolb | 141 | 0-6 | | | | | |
| Brett Martinez | 141 | 15-14 | 7-9 | 3:44 | 2 | 4 | |
| Dominic Sabia | 141 | 10-5 | | 1:19 | 4 | 1 | |
| Casey Seidle | 285 | 1-2 | | 1:50 | 1 | | |
| Jon Shaffer | 165 | 15-13 | 9-7 | | | 3 | |
| Billy Stenack | 125 | 4-1 | | 0:12 | 2 | | |
| Jason Trupp | 141 | 2-2 | | 4:55 | 1 | 1 | |
| Bret Wade | 184 | 21-17 | 9-6 | 1:09 | 6 | 3 | |
| Ryan Wasser | 174 | 21-13 | 8-3 | 0:44 | 4 | 1 | 3 |
| Troy Wasser | 174 | 1-2 | | | | | |
| Cory Weiss | 125 | 2-24 | 2-14 | 7:23 | 1 | | |
| TEAM TOTALS | 196-191 | 59-74 | 0:12 | 45 | 24 | 6 | |



Facilities

Kutztown University is blessed with some of the top athletic facilities among Division II colleges and universities in the eastern United States. Twenty of KU's 21 teams have their home venues on campus.

Keystone Hall

The headquarters of the KU athletic department, Keystone Hall is the hub of indoor athletic activity on campus. Keystone Hall also houses the Golden Bear Sports Medicine department, designated locker rooms for all intercollegiate athletic teams, and a state-of-the-art fitness room.

Keystone Arena ►

The 3,400-seat Keystone Arena, located in the center of Keystone Hall, is the home of the Golden Bear volleyball team in the fall, and the men's and women's basketball and wrestling teams in the winter. It served as the site of a town meeting by President George W. Bush in 2004 and was the training camp home of the NBA's New Jersey Nets in the fall of 1995.



◀ Risley Weight Room

Athletes get extensive use from the free-weight room, located on the ground floor of Risley Hall, the original gym. The weight room was recently renovated and expanded.

Keystone Field House ►

Keystone Field House is home to the KU men's and women's indoor track teams, and has been the site of major eastern championships in recent years. The field house is used by all teams for indoor practice and overflow athletic events. It is also used for non-athletic events, such as President Clinton's address during his visit in January 1995.



Athletic Honors



PSAC MEDALISTS

Place-Name (Weight)

1941: 1st-Ed Osinski (155)
1942: 1st-Bruce Becker (121), Ed Osinski (155)
1968: 4th-Chuck Joseph (123)
1970: 4th-Guerry Beatson (126), Fred Holtz (158)
1971: 4th-John Correll (190)
1972: 4th-John Franco (150)
1973: 5th-George Fidmik (126), Chuck Darte (190); 6th-Joe Hill (118)
1974: 6th-George Schneck (HWT)
1975: 5th-George Schneck (HWT); 6th-Dave Graybill (158)
1976: 4th-Jon Bittenbender (142); 6th-Lou Lazzari (150)
1977: 2nd-Jon Bittenbender (142); 3rd-Tim Anspach (134); 4th-Bill Young (177)
1978: 3rd-Dale Derr (190); 6th-Brian Maginnis (177)
1981: 5th-Rich Amy (150)
1982: 4th-Tom Toborowski (177); 6th-Bruce Herman (142)
1984: 4th-Rich Amy (167)
1985: 5th-Tom Toborowski (HWT); 6th-Bruce Herman (150)
1986: 4th-Dave Card (158)
1989: 6th-Chris Coffin (134), Jim Becker (177)
1991: 4th-John Stay (177)
1992: 4th-Bryan Leese (167), 6th-Eric Boncher (126)
1993: 5th-Bryan Leese (167); 6th-Chris Barone (142)
1994: 4th-Pat Mathuse (118); 6th-Todd Wagaman (190)
1995: 4th-Todd Fluck (177); 5th-Jason Kerkusz (158); 6th-Eric Stoltz (167)
1996: 5th-Pat Mathuse (118), Chad Groover (134); 6th-Jason Kerkusz (158), Todd Wagaman (190), Joe Simeone (HWT)
1997: 4th-Jim Leiner (177)
1998: 5th-Kohlby O'Donnell (126); 6th-Kriss Bellanca (150)
1999: 5th-Brian Burzynski (125), Justin McNicholas (174)
2000: 4th-Joe Tout (HWT); 5th-Brian Burzynski (125); 6th-Steve Felder (133)
2001: 3rd-Brian Burzynski (125); 5th-Kohlby O'Donnell (133), Ryan Smircich (165)
2002: 5th-Brian Burzynski (125), Kohlby O'Donnell (133), Chris Jacobs (157), Nick Brumbaugh (174); 6th-Ryan Wasser (165), C.C. Ezell (197), Octavius Newman (285)
2003: 4th-Anthony Corpora (165), 6th-Joe Bentz (125), Vinny Rufo

(133) & Chris Elphick (197)
2004: 4th-Andy Freas (285); 5th-Jason Trupp (133); 6th-Jamie Gill (157)
2005: 5th-Nick Nauroth (133), Ryan Wasser (174); Andy Freas (285); 6th-Roy Gecelosky (184)
2006: 4th-Brandon Clemmer (133), Chris Chambers (149); 6th-Bret Martinez (141), Ryan Wasser (174), Bret Wade (184), Curtis Beardsell (197)

NCAA DII NORTHEAST/ EAST REGIONAL MEDALISTS

Place-Name (Weight)

1992: 2nd-Terry Daubert (142); 3rd-Eric Boncher (126), Jarrid Konya (167), Steve Fisher (177), John Stay (190); 4th-Mike Peters (150)
1993: 1st-Eric Boncher (134), Jarrid Konya (158) (Out-standing Wrestler); 3rd-Jason Kerkusz (150); 4th-Pat Mathuse (118)
1994: 1st-Pat Mathuse (118)
1995: 1st-Pat Mathuse (118); 2nd-Jason Kerkusz (158); 3rd-Tim Riehl (126), Jim Leiner (167), Todd Fluck (177); 4th-Todd Ayers (HWT)
1996: 2nd-Pat Mathuse (118), Tim Riehl (126), Jason Kerkusz (158); 3rd-Todd Fluck (167), Joe Simeone (HWT)
1997: 2nd-Todd Fluck (167), James Leiner (177), Joe Simeone (HWT); 4th-Chad Groover (134), Chad Wivell (142), Brad Wilhelm (190)
1998: 2nd-Kohlby O'Donnell (126); 3rd-Chad Wivell (142), Kriss Bellanca (150), Brad Wilhelm (190)
1999: 3rd-Kohlby O'Donnell (141), Chad Wivell (149), Kriss Bellanca (165)
2000: 1st-Dan Tashner (141); 2nd-Brian Burzynski (125), Kriss Bellanca (165); 3rd-Chris Jacobs (157), Nick Brumbaugh (174); 4th-Nick Murn (184), Sam Holloway (HWT)
2001: 2nd-Brian Burzynski (125); 3rd-Kohlby O'Donnell (133); 4th-Sam Holloway (HWT); 5th-CC Ezell (190)
2002: 3rd-Brian Burzynski (125), Kohlby O'Donnell (133), Nick Brumbaugh (174); 5th-Chris Jacobs (157); 6th-Ryan Wasser (165), C.C. Ezell (197)

2003: 3rd-Nick Brumbaugh (174); 4th-Anthony Corpora (165); 6th-Joe Bentz (125)
2004: 4th-Bret Wade (197); 5th-Roy Gecelosky (174), Jason Trupp (133); 6th-Vinny Rufo (125), Andy Freas (285), Craig Kunsman (149)
2005: 2nd-Brandon Clemmer (125); 3rd-Ryan Wasser (174); 5th-Bret Wade (184); 6th-Dominic Sabia (149), Kevin Kalbach (157), Steve Busch (197), Andy Freas (285)
2006: 2nd-Chris Chambers (149), Kevin Kalbach (157); 3rd-Brandon Clemmer (133); 4th-Bret Wade (184), Andy Freas (285); 6th-Ryan Wasser (174)

NCAA ALL-AMERICA

Place-Name (Weight)

Division III

1974: 3rd-Louis Demyan (158); 5th-John Bittenbender (142)
1978: 5th-Dale Derr (190)

Division II

1993: 7th-Eric Boncher (134)
1995: 8th-Jason Kerkusz (158)
1998: 5th-Kohlby O'Donnell (126)
2000: 8th-Dan Tashner (141)
2001: 7th-Kohlby O'Donnell (133)
2002: 7th-Brian Burzynski (125), Kohlby O'Donnell (133)
2003: 8th-Nick Brumbaugh (174)

KU ATHLETICS HALL OF FAME

| <i>Name (grad/wrestled)</i> | <i>Inducted</i> |
|-----------------------------|-----------------|
| Bruce Becker (1941-43) | 1998 |
| Louis Demyan (1975) | 1993 |
| Dale Derr (1979) | 1990 |
| Bruce Herman (1985) | 2003 |
| Edward Osinski (1942) | 1994 |
| Michael Pladus (1980) | 2000 |
| Daniel Hinkel (coach) | 2003 |

KU IN THE PSAC WRESTLING HALL OF FAME

| <i>Name (coached)</i> | <i>Inducted</i> |
|--------------------------|-----------------|
| James McIntyre (1972-77) | 1998 |
| Daniel Hinkel (1964-96) | 1999 |

Records/History



Season Wins

| Wins | Name | Season |
|------|--------------------|---------|
| 36 | Kohlby O'Donnell | 1997-98 |
| 30 | Kohlby O'Donnell | 2001-02 |
| 30 | Bruce Herman | 1982-83 |
| 28 | Bruce Herman | 1981-82 |
| 27 | Kohlby O'Donnell | 2000-01 |
| 26 | Ryan Wasser | 2004-05 |
| | Chris Jacobs | 2001-02 |
| | Brian Burzynski | 2000-01 |
| | Bruce Herman | 1983-84 |
| | Daniel Hinkel, Jr. | 1977-78 |

Season Winning Pct.

(competed in min. 75% of team's matches)

| Pct. | Name | Season |
|------|--------------------|---------|
| 1.00 | Bruce Becker | 1941-42 |
| .933 | Louis Demyan | 1973-74 |
| .885 | Tim Riehl | 1994-95 |
| .867 | Daniel Hinkel, Jr. | 1977-78 |
| .857 | Chris Barone | 1992-93 |
| .833 | Kohlby O'Donnell | 2001-02 |
| | Bruce Herman | 1982-83 |
| | John Bittenbender | 1975-76 |
| .828 | Pat Mathuse | 1994-95 |
| .813 | Bruce Herman | 1983-84 |

Fastest Fall

| Time | Name | Season |
|------|------------------|---------|
| 0:12 | Cristian Luciano | 2003-04 |
| | Billy Stenack | 2005-06 |
| 0:13 | Cristian Luciano | 2003-04 |
| 0:18 | Kriss Bellanca | 2000-01 |
| 0:19 | Joe Tout | 1998-99 |
| 0:21 | Ian Zimmerman | 1997-98 |
| | Brad Wilhelm | 1997-98 |

Career Wins

| # | Name | Seasons |
|-----|--------------------|-----------|
| 109 | Bruce Herman | 1981-85 |
| 108 | Kohlby O'Donnell | 1997-2002 |
| 84 | Rich Amy | 1981-84 |
| 80 | Pat Mathuse | 1992-96 |
| 79 | Brian Burzynski | 1998-2002 |
| 68 | Bret Wade | 2002-06 |
| 63 | Jason Kerkusz | 1992-96 |
| 61 | Ryan Wasser | 2001-06 |
| 60 | Daniel Hinkel, Jr. | 1977-81 |
| 57 | Kriss Bellanca | 1997-2001 |
| | Jim Leiner | 1993-97 |
| 56 | Nick Brumbaugh | 1998-2003 |
| 55 | Chad Wivell | 1996-2000 |
| 54 | Sam Holloway | 1996-2001 |
| | Tim Riehl | 1994-97 |
| 53 | Todd Fluck | 1994-97 |
| 51 | Chris Leese | 1991-95 |

Year-by-Year Records

| Overall Year | W | L | T | PSAC | Region | NCAA | Coach |
|--------------|----|----|---|------|--------|--------|----------|
| 1940-41 | 1 | 4 | 1 | - | - | - | Moll |
| 1941-42 | 3 | 7 | 0 | - | - | - | Moll |
| 1942-43 | 2 | 3 | 1 | - | - | - | Moll |
| 1965-66 | 4 | 6 | 0 | - | - | - | Hinkel |
| 1966-67 | 6 | 5 | 0 | - | - | - | Hinkel |
| 1967-68 | 7 | 6 | 0 | - | - | - | Hinkel |
| 1968-69 | 7 | 5 | 1 | - | - | - | Hinkel |
| 1969-70 | 7 | 10 | 1 | - | - | - | Hinkel |
| 1970-71 | 10 | 6 | 1 | 11th | - | - | Hinkel |
| 1971-72 | 4 | 5 | 1 | 11th | - | - | Hinkel |
| 1972-73 | 5 | 9 | 0 | 10th | - | - | McIntyre |
| 1973-74 | 9 | 8 | 0 | 13th | - | - | McIntyre |
| 1974-75 | 5 | 13 | 0 | 13th | - | - | McIntyre |
| 1975-76 | 9 | 8 | 0 | 11th | - | - | McIntyre |
| 1976-77 | 13 | 4 | 0 | 10th | - | - | McIntyre |
| 1977-78 | 12 | 5 | 0 | 11th | - | - | Posey |
| 1978-79 | 8 | 7 | 0 | 12th | - | - | Posey |
| 1979-80 | 9 | 5 | 0 | 12th | - | - | Posey |
| 1980-81 | 13 | 1 | 0 | 12th | - | - | Posey |
| 1981-82 | 6 | 9 | 2 | 10th | - | - | Posey |
| 1982-83 | 5 | 12 | 0 | 12th | - | - | Posey |
| 1983-84 | 6 | 6 | 0 | 12th | - | - | Posey |
| 1984-85 | 7 | 8 | 0 | 9th | - | - | Zellner |
| 1985-86 | 10 | 8 | 0 | 10th | -* | - | Zellner |
| 1986-87 | 15 | 12 | 1 | 12th | 8th* | - | Zellner |
| 1987-88 | 14 | 0 | 1 | 12th | 10th | - | Zellner |
| 1988-89 | 9 | 12 | 0 | 11th | -* | - | Zellner |
| 1989-90 | 11 | 11 | 0 | 10th | 13th* | - | Hinkel |
| 1990-91 | 11 | 6 | 0 | 10th | 10th* | - | Hinkel |
| 1991-92 | 11 | 7 | 1 | 8th | 5th | - | Hinkel |
| 1992-93 | 13 | 5 | 0 | 10th | 3rd | 28th | Hinkel |
| 1993-94 | 9 | 6 | 0 | 10th | 5th | 31st | Hinkel |
| 1994-95 | 13 | 3 | 1 | 9th | 4th | 33rd | Hinkel |
| 1995-96 | 11 | 2 | 0 | 8th | 2nd | 29th | Hinkel |
| 1996-97 | 4 | 14 | 0 | 9th | 3rd | 31st | Tocci |
| 1997-98 | 7 | 13 | 0 | 9th | 5th | 24th | Tocci |
| 1998-99 | 2 | 12 | 0 | 9th | 6th | 30th | Tocci |
| 1999-00 | 6 | 7 | 0 | 9th | 4th | 30th | Tocci |
| 2000-01 | 9 | 7 | 0 | 7th | 7th | T-26th | Fisher |
| 2001-02 | 15 | 4 | 0 | 8th | 5th | 20th | Fisher |
| 2002-03 | 9 | 7 | 0 | 9th | 8th | 27th | Fisher |
| 2003-04 | 8 | 7 | 0 | 9th | 7th | T-31st | Fisher |
| 2004-05 | 10 | 2 | 0 | 8th | 7th | 28th | Fisher |
| 2005-06 | 9 | 7 | 0 | 6th | 6th | 27th | Fisher |

*Note: KU competed at the Division I level these seasons

Career Coaching Records

| Coach | Years | Record |
|--------------|-----------------|----------|
| Lloyd Moll | 1940-43 | 6-14-2 |
| Dan Hinkel | 1966-72, '89-96 | 124-83-6 |
| Jim McIntyre | 1972-77 | 41-42 |
| Nevin Posey | 1977-84 | 59-45-2 |
| Al Zellner | 1984-89 | 46-40-2 |
| Pat Tocci | 1996-2000 | 19-46 |
| Rob Fisher | 2000- | 60-34 |



photo by KU university relations

The brand new, 64,623 square foot student recreation center opened in the fall of 2006. The facility, located between Keystone Hall and University Field, is THE place to be for student recreation and fitness on campus. Among the amenities are a nearly 9,000 sq. ft. fitness center and weight room, two group fitness studios, two

racquetball courts, an indoor rock climbing wall, a synthetic surface gymnasium with curved walls for indoor sports, a synthetic surface half gymnasium, a suspended jogging track (approx. 1/10 mile), an office suite for recreational services staff, a meeting room, retail space/snack bar and locker rooms with jacuzzis.

2005-06 Dixon Trophy



photo by KU sports information

For the first time in school history, Kutztown University is the winner of the Pennsylvania State Athletic Conference's (PSAC) Dixon Trophy for the 2005-06 academic year. The trophy is presented annually to the league's most successful all-around program.

The Dixon Trophy is named after F. Eugene Dixon, Jr., former chairman of the Board of Governors of Pennsylvania's State System of Higher Education. It is awarded annually to the PSAC member institution that accumulates the most points based on results of conference playoffs and/or regular-season records. Each institution's point total is calculated by adding

its top six men's finishes and top six women's finishes in 21 conference sports.

Kutztown, the runner-up the past two years, totaled 140 points, edging Shippensburg by one and a half points.

Pictured above are several representatives of Kutztown University's athletic teams accepting the Dixon Trophy at a presentation in September. On hand to present the trophy to KU's coaches and athletes were President F. Javier Cevallos (far left), Vice President for Student Services and Campus Life Chick Woodard (front, third from right) and Director of Athletics Greg Bamberger (far right).

Academics & Athletics at KU



The **KU Academic Success Initiative**, when fully implemented by the coaching staff, provides the appropriate support, incentive, and opportunity for students to make a similar effort toward their academic success as made toward their athletic performance. The Initiative is based on the expectation that both individual and team academic performance will be at or above the level of the overall student body. This expectation is built into the evaluation of coaches and is an integral part of the process of awarding athletic scholarships. KU provides athletic scholarships to support the academic pursuits of its student-athletes. Student-athletes are expected to participate in sports because they love to do so.

Continuing indications reveal that the Initiative works and is having a profound and measurable effect on both academic and athletic performance. Over the past 11 years, KU's freshman class of student-athletes has had a significantly higher grade-point average than the overall freshman class. In 2005-06, KU's student-athletes achieved a cumulative grade-point average of 2.84, the second highest in school history. Also, 94 Golden Bears were recognized as Pennsylvania State Athletic Conference (PSAC) Scholar Athletes.

The **KU Academic Success Initiative** contains the following components:

The Monitoring of Progress: The academic progress of student-athletes is continually tracked and monitored.

Course Selection and Registration: In order to avoid unnecessary conflicts between athletic events and classes, student-athletes are provided a registration date earlier than the rest of the campus student population. Registration is now done online via the Internet. Students can go online at any time to view their schedule, grades, transcript, financial aid, payments, charges and restrictions on their account.

Academic Coaching: This year-long program is based on one-on-one personal contacts between the coach and the student-athlete.

Faculty Advising: This is an essential part of the college experience and is often a major factor in the ultimate academic success of students. Advisor meetings are required in order to register for classes.

Pre-Season Academic Seminars: During pre-season camps and/or the first week of classes, athletes may participate in seminars addressing topics such as time management, study skills, class participation, student/faculty relationships and test-taking strategies.

Career Services Visit For Undeclared Majors: Incoming students who have not yet declared a major or who may be unsure of their chosen major are highly encouraged to visit the Career Services Office.

Referrals For Services to the Department of Developmental Studies: Student-athletes are strongly encouraged to make use of the Department of Developmental Studies' services in regard to tutoring or other needs

for specialized instruction.

Referrals For Services to the Counseling and Advisement Center: Trained counselors/faculty advisors are available to help with psychological/academic counseling/advisement issues.

Library Tour: A library tour is highly recommended of all incoming student-athletes.

Personal Computer: Each student-athlete is strongly encouraged to have access to a networked personal computer.

Academic Accomplishment Recognition

The Department of Athletics has developed a comprehensive program to provide incentive for and acknowledgement of the many academic accomplishments of its student-athletes. Below are some examples of the program.

Graduation Reception: The athletic department hosts a reception for graduating student-athletes and their families at the winter and spring commencement ceremonies to recognize the culmination of student-athletes' education at Kutztown University.

Awards and Honors: KU offers specific academic scholarships available only to student-athletes. KU student-athletes are nominated for all available NCAA, PSAC and CoSIDA awards.

Scholar-Athlete Banquet: Each year, the PSAC Scholar-Athletes are recognized at a banquet in their honor.

Dean's List Ceremony: All Kutztown University student-athlete dean's list recipients are acknowledged at a basketball game every year.

2006-2007

Kutztown University Wrestling Schedule

NOVEMBER

SAT 18 at East Stroudsburg Open 9:00 AM

DECEMBER

SUN 3 at Penn State Open 9:00 AM

SAT 9 AMERICAN INTERNATIONAL NOON

JANUARY

THU 4 at Messiah 7:00 PM

SAT 6 PITT-JOHNSTOWN 1:00 PM

WED 10 at King's / vs. SUNY-Oneonta NOON

FRI 12 WILKES NOON

FRI 19 at East Coast Duals 6:00 PM

-SAT 20 (at Pitt-Johnstown)

SAT 27 at PSAC Championships 9:00 AM

(at Bloomsburg)

WED 31 at Elizabethtown 7:30 PM

FEBRUARY

THU 8 at Millersville 7:00 PM

FRI 9 at York 7:00 PM

THU 15 SHIPPENSBURG 7:00 PM

FRI 23 NCAA East Regionals TBA

-SAT 24 (at UNC-Pembroke)

MARCH

FRI 9 +NCAA Championships TBA

-SAT 10 (at Nebraska-Kearney)

Home events in **BOLD CAPS**

+ if team qualifies