



Pennsylvania's
State System of Higher Education
FOUNDATION

SPRING 2026 PASSHE FOUNDATION SCHOLARSHIPS

Attention all students, trusted faculty, and administrators:

We are excited to announce that our scholarship portfolio will be opening on November 3rd for student's applications for the Spring 2026 semester.

Interested students can find our scholarships on the Student Resources page on our website or they can apply directly at <https://thepafoundation.scholarships.ngwebsolutions.com/>

Please take a moment to look through the following pages, which contain an comprehensive list of available scholarships.

Please Note: All PASSHE Foundation Scholarships are only available to students attending a PASSHE University



AT&T PUBLIC SAFETY SCHOLARSHIP



The AT&T Public Safety Scholarship is designed to support students pursuing a degree, certification, or licensure in a public safety related field

ELIGIBILITY

Open to students pursuing the following career fields:

- Criminal Justice
- Police Officers
- Emergency Medical Technicians (EMTs) or Paramedics
- Emergency Medical Responders
- Firefighters
- Correctional Officer
- Occupational Health & Safety Specialist
- Frontline Medical & Health Services



Scholarships will be awarded based on financial need, with top priority given to students pursuing licensure or certification.

SCHOLARSHIP AWARD AMOUNT: \$1,000.00

Please Note: All PASSHE Foundation Scholarships are only available to students attending a PASSHE University



**OPEN TO ALL
ACADEMIC
LEVELS**

EILEEN SHOWERS SECONDARY EDUCATION SCHOLARSHIP

ELIGIBILITY

- Full-time undergraduate sophomores, juniors and seniors
- 3.0 GPA
- Student must demonstrate financial need
- Students pursuing a degree in secondary education
- Priority will be given to students who are pursuing a career as an English teacher

Applicants must provide a short 4-5 sentence essay to demonstrate why they would like to become a secondary education professional.

SCHOLARSHIP AWARD AMOUNT: \$1,000.00

[Eileen Showers Secondary Education Application](#)



**OPEN TO
SOPHOMORES,
JUNIORS, AND
SENIORS**

FITZ DIXON MEMORIAL SCHOLARSHIP



ELIGIBILITY

- Full-time undergraduate sophomores, juniors, or seniors
 - With a GPA of 3.0 or higher
- Full-time graduate students who have completed at least 9 credits
 - With a GPA of 3.5 or higher

SCHOLARSHIP AWARD AMOUNT: \$500.00

[Fitz Dixon Memorial Scholarship Application](#)

Please Note: All PASSHE Foundation Scholarships are only available to students attending a PASSHE University



**OPEN TO
SOPHOMORES,
JUNIORS, SENIORS,
AND GRADUATE
STUDENTS**

PA STATE SYSTEM BOARD OF GOVERNORS CHAIR GUIDO M. PICHINI ENDOWED SCHOLARSHIP

ELIGIBILITY

- Full-time undergraduate students
- GPA of 3.2 or higher
- Must demonstrate financial need
- Must demonstrate leadership aspirations at the university or within the community

SCHOLARSHIP AWARD AMOUNT: \$1,350.00

[Guido M. Pichini Endowed Scholarship Application](#)



**OPEN TO
SOPHOMORES,
JUNIORS, AND
SENIORS**

Please Note: All PASSHE Foundation Scholarships are only available to students attending a PASSHE University

H.E.R.O.E.S

HEALTH AND EMERGENCY RESPONDERS OPERATIONAL EXCELLENCE SCHOLARSHIP

OPEN TO
SOPHOMORES,
JUNIORS,
SENIORS

ELIGIBILITY

- Undergraduate sophomores, juniors, or seniors with:
 - 2.5 GPA or higher
 - Enrolled full-time, part-time, or non-degree seeking/credentialing
 - Pursuing a degree or career in the following fields:
 - Criminal Justice
 - Emergency Medical Technicians (EMTs) or Paramedics
 - Emergency Responders
 - Occupational Health & Safety Specialist
 - Frontline Health Service Providers
 - Public Health
 - Public Safety



Scholarships will be awarded based on financial need, with top priority given to students planning to live or work in a rural community.

SCHOLARSHIP AWARD AMOUNT: \$2,000.00

Please Note: All PASSHE Foundation Scholarships are only available to students attending a PASSHE University



HIGHMARK BRIGHT BLUE FUTURES SCHOLARSHIP FOR RISING JUNIORS

ELIGIBILITY

- Full-time undergraduate juniors
- GPA of 3.0 or higher
- Must demonstrate financial need as determined by FAFSA.
- Priority will be given to students seeking degrees in the following areas: Clinical Healthcare, Allied Health, Therapy and Rehabilitation, Healthcare Administration, Information Technology, Physical Science, and Public Health or other relevant healthcare majors.

SCHOLARSHIP AWARD AMOUNT: \$1,000.00
RENEWABLE FOR 1 YEAR

[Highmark Rising Juniors Scholarship Application](#)



**OPEN TO
JUNIORS**

Quanel
Robinson

Please Note: All PASSHE Foundation Scholarships are only available to students attending a PASSHE University

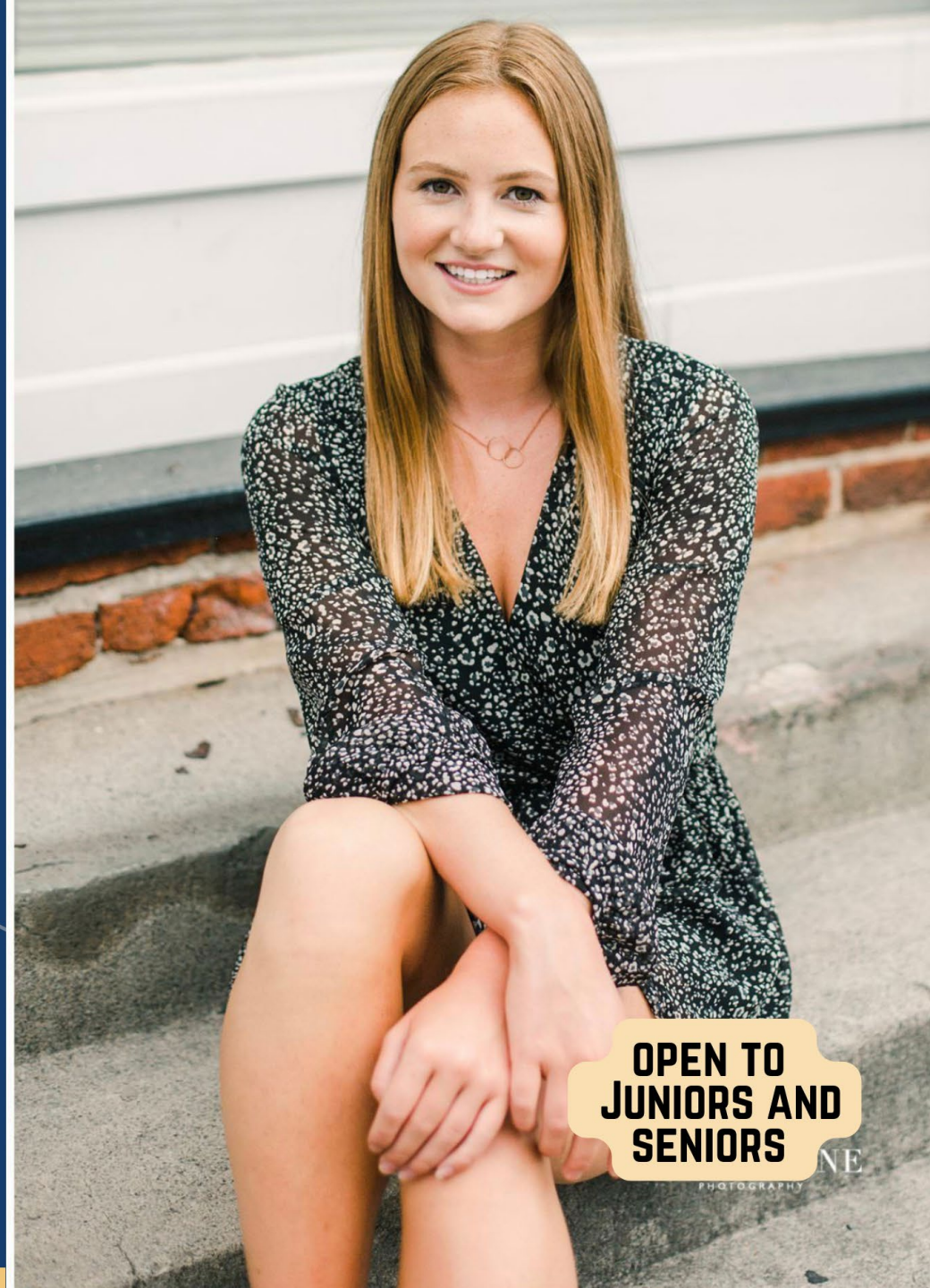
M&T BANK ENDOWED SCHOLARSHIP

ELIGIBILITY

- Full-time undergraduate juniors and seniors
- 3.0 GPA or higher
- Must demonstrate financial need

SCHOLARSHIP AWARD AMOUNT: \$1,000.00

[M&T Bank Endowed Scholarship Application](#)



**OPEN TO
JUNIORS AND
SENIORS**

PHOTOGRAPHY
NE

Please Note: All PASSHE Foundation Scholarships are only available to students attending a PASSHE University

M&T BANK SCHOLARSHIP

ELIGIBILITY

- Full-time undergraduate students
- Incoming freshman must have a GPA of 2.7 or higher
- Undergraduate students must have GPA of 3.0 or higher
- Applicants must reside in Cumberland, Dauphin, Franklin, Allegheny, Butler, Armstrong, Beaver, Fayette, Washington, or Westmoreland counties
- Priority will be given to incoming freshman

**SCHOLARSHIP AWARD AMOUNT: \$1,000.00
SPLIT BETWEEN THE FALL AND SPRING SEMESTERS**

[M&T Bank Scholarship Application](#)



**OPEN TO
FRESHMEN,
SOPHOMORES,
JUNIORS, AND
SENIORS**

PA STATE SYSTEM OF HIGHER EDUCATION SCHOLARSHIP PROGRAM

ELIGIBILITY

- Applicant must be an employee or the dependent of an employee at one of the approved Commonwealth of Pennsylvania state agencies.
- Applicant must be enrolled full-time or part-time at a PASSHE University.
- Applicant must be good academic standing.

Awards will be distributed on a first-come, first-served basis. If a student is not selected, they can reapply for the scholarship the following semester. First priority will go to students who have yet to receive the award.

AWARD AMOUNT

Full-time students are eligible for an award of up to \$2,000 and part-time students (enrolled in less than 12 credits or non-credit bearing classes) are eligible for an award of up to \$1,000. Scholarship funds are issued directly to your university to support tuition, room, and board.

PA State System of Higher Education Scholarship Program Application

Please Note: All PASSHE Foundation Scholarships are only available to students attending a PASSHE University



**OPEN TO ALL
ACADEMIC
LEVELS**

PSECU SCHOLARSHIP FOR RISING JUNIORS AND SENIORS

ELIGIBILITY

- Full-time undergraduate juniors and seniors
- GPA of 3.0 or higher
- Must demonstrate financial need
- Must be a resident of Pennsylvania
- Must be majoring in finance, business, communications, marketing, human resources, information technology, or criminal justice

SCHOLARSHIP AWARD AMOUNT: \$1,000.00

[PSECU Rising Juniors Scholarship Application](#)



**OPEN TO
JUNIORS AND
SENIORS**

Please Note: All PASSHE Foundation Scholarships are only available to students attending a PASSHE University

PSECU STUDY ABROAD SCHOLARSHIP

ELIGIBILITY

- Full-time undergraduate students
- Must be a Pell Grant or PHEAA-qualified
- Must be a resident of Pennsylvania.
- Must be participating in an institutionally approved overseas program.
- Must be in good academic and judicial standing
- Preference will be given to students who have no overseas experience.

SCHOLARSHIP AWARD AMOUNT: \$2,500.00



**OPEN TO
FRESHMEN,
SOPHOMORES,
JUNIORS, AND
SENIORS**

Please Note: All PASSHE Foundation Scholarships are only available to students attending a PASSHE University

SUPPORTING STUDENT SUCCESS SCHOLARSHIP

ELIGIBILITY

- Full-time undergraduate students
- Applicant must be in good academic standing with a GPA of 2.0 or higher
- Priority will be given to applicants that demonstrate financial need

SCHOLARSHIP AWARD AMOUNT: \$1,000.00

[Supporting Student Success Scholarship Application](#)



**OPEN TO
FRESHMEN,
SOPHOMORES,
JUNIORS, AND
SENIORS**

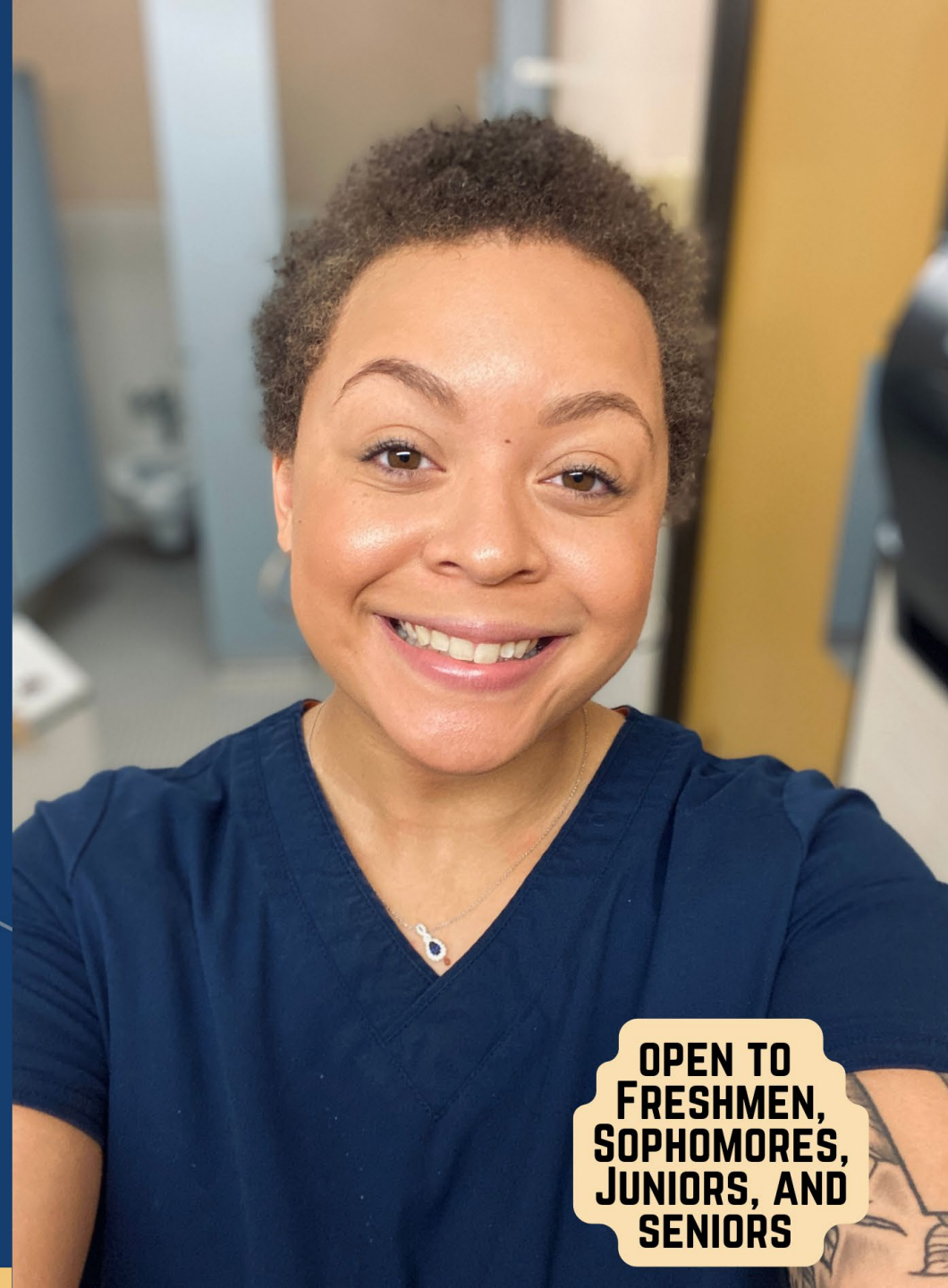
TRANSFER SUCCESS SCHOLARSHIP

ELIGIBILITY

- Full-time undergraduate students
- 2.5 GPA or higher
- Applicant must have transferred to a PASSHE university during the academic year in which you are applying
- Must demonstrate financial need

SCHOLARSHIP AWARD AMOUNT: \$1,000.00

[Transfer Success Scholarship Application](#)



**OPEN TO
FRESHMEN,
SOPHOMORES,
JUNIORS, AND
SENIORS**

Please Note: All PASSHE Foundation Scholarships are only available to students attending a PASSHE University

THE GIANT COMPANY SCHOLARSHIP FOR RISING JUNIORS

ELIGIBILITY

- First preference is given to The Giant Company team members and their dependents
- Must be enrolled as a full-time student at one of the 10 State System universities
- Must be pursuing a degree in a business program or any other program which could benefit the retail grocery industry
- Must be a rising junior who has earned 60 credits with a GPA of 3.0 or greater



SCHOLARSHIP AWARD AMOUNT: \$1,000.00

[Giant Company Rising Juniors Scholarship Application](#)



WILLIAM D. GREENLEE SCHOLARSHIP

ELIGIBILITY

- Full-time undergraduate juniors and seniors
- GPA of 3.0 or higher
- Must major in political science, journalism, or communications
- Must reside in Adams, Cumberland, Dauphin, Franklin, Lebanon, Northumberland, Perry, or York county
- Priority will be given to students who demonstrate financial need

SCHOLARSHIP AWARD AMOUNT: \$2,500.00
AMOUNT IS SPLIT BETWEEN FALL AND SPRING SEMESTERS

[William D Greenlee Scholarship Application](#)



**OPEN TO
JUNIORS AND
SENIORS**

WELLS FARGO SCHOLARSHIP FOR ACADEMIC EXCELLENCE

ELIGIBILITY

- Full-time undergraduate students
- GPA of 3.2 or higher
 - Incoming freshman must have a high school GPA of 3.7 or higher
- Must reside in Pennsylvania
- Priority will be given to freshman that demonstrate financial need

SCHOLARSHIP AWARD AMOUNT: \$1,000.00

[Wells Fargo Scholarship Application](#)



**OPEN TO
FRESHMEN,
SOPHOMORES,
JUNIORS, AND
SENIORS**