

i-Clicker Registration Instructions

Web Registration

To register online, go to iclicker.com and click the **Register a Remote** link.

Register a Remote

Your remote ID is printed on your iClicker remote as an 8-character code (see image). Your instructor will provide the answers to the following questions in order to register your remote for their class. Be sure to contact your instructor before you register.

Which software will your instructor use in class?

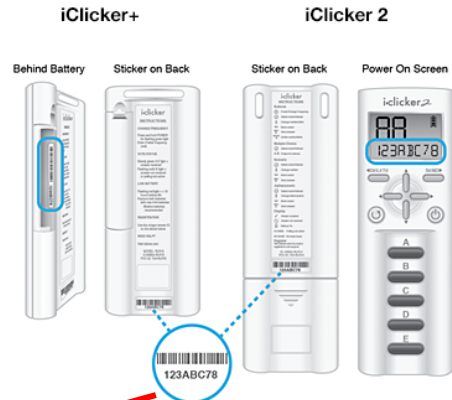
→ iClicker Classic (formerly iClicker 7) ▼

Which Learning Management System does your institution use?

→ My institution does not use an LMS ▼

Your instructions:

You can register your remote on this website. [Click here](#) to complete the registration form.



i>clicker. Products Customers User Community Support News & Events About i>clicker My Account Cart

Register Your Clicker

Thank you for using i>clicker! Please complete the form below. Your professor will then be able to give you credit for using your i>clicker in class.

NOTE: If you registered your i>clicker in Spring or Summer 2011, you will need to register again for Fall 2011. Your registration is valid through the end of this term.

If your remote ID has rubbed off or is illegible, you can locate your remote ID by using our [lookup tool](#). Do you still have questions about registration? Watch our [online registration video tutorial](#) to learn how to register your i>clicker.

• Register Your Clicker
[Find Your Clicker ID](#)
[Downloads](#)
[Training](#)
[User Guides](#)
[FAQs](#)

First Name:

Last Name:

Student ID:

Remote ID:

**Your student ID is assigned to you by your school. You may have more than one possible "student ID" (e.g. your email address, your Blackboard ID, a numeric ID). Your instructor likely has instructions about which student ID to use. Check your syllabus or with your instructor*

[Having trouble finding your clicker ID?](#)



Please type in the verification word in the image above.

ENTER

Register Your Clicker Purchase Contact Us Search

To complete the student registration form, students must:

1. Enter your **first name** and **last name** in the appropriate fields.
2. Enter your **KU student ID number**. Do not include any leading zeros. Your ID number is the shorter number printed on your student ID.
3. Enter your **i>clicker remote ID**. The remote ID is the 8-character alphanumeric code printed below the barcode on the back of their remote. (See image below)

This remote ID can also be found behind the battery in the battery compartment.



4. Enter the letters or numbers in the captcha security image on the screen. This verification image is a slightly distorted series of characters used to prevent spam bots from submitting the form. Students can request another image if they find the first hard to see, or play an audio reading of it instead.
5. Click the **Enter** button. An on-screen message confirms that registration was successful.