



Network & Server Support

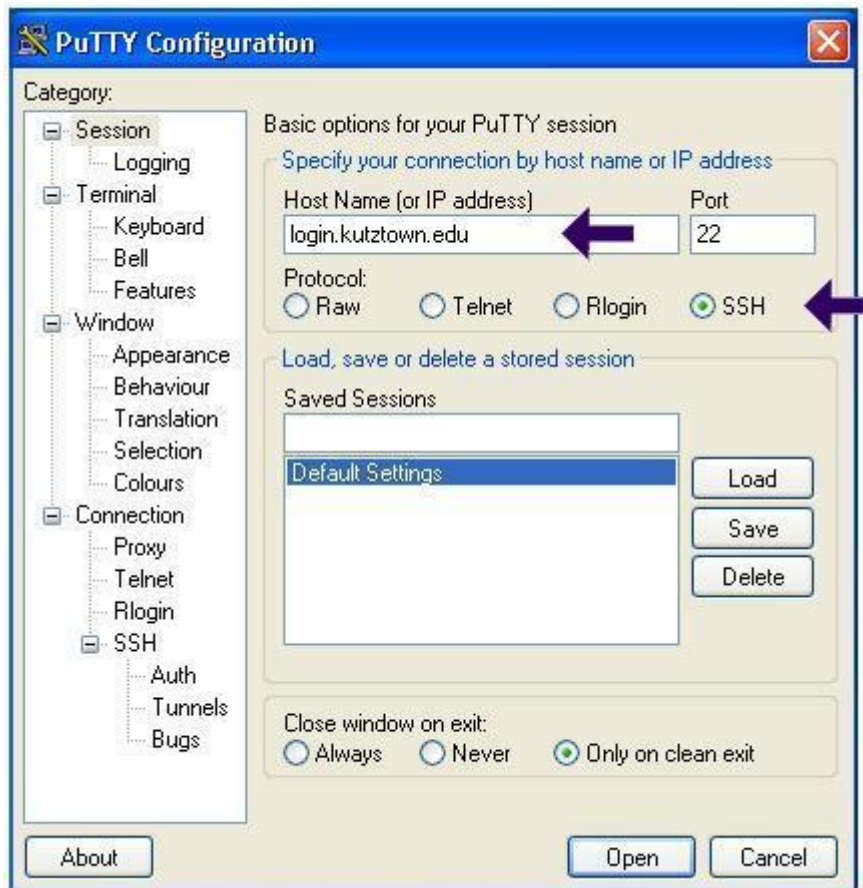
Connecting the Unix Systems -- PuTTY

To use PuTTY with Windows you must first download it from [here](#).
More information on putty can be found [here](#).

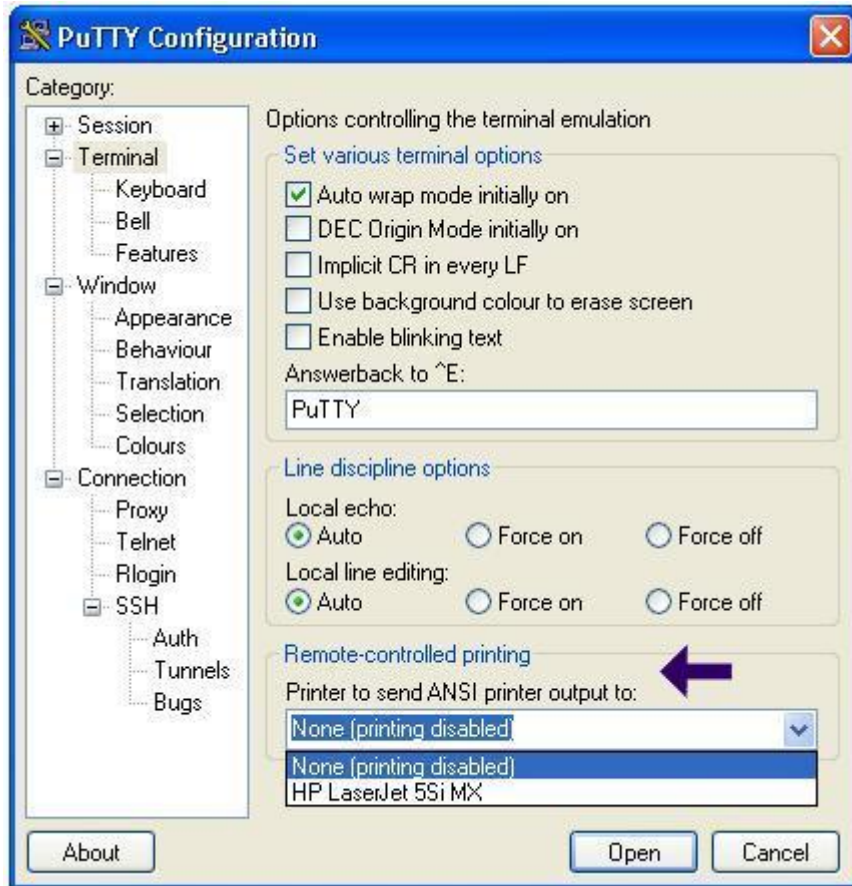


putty

Run putty

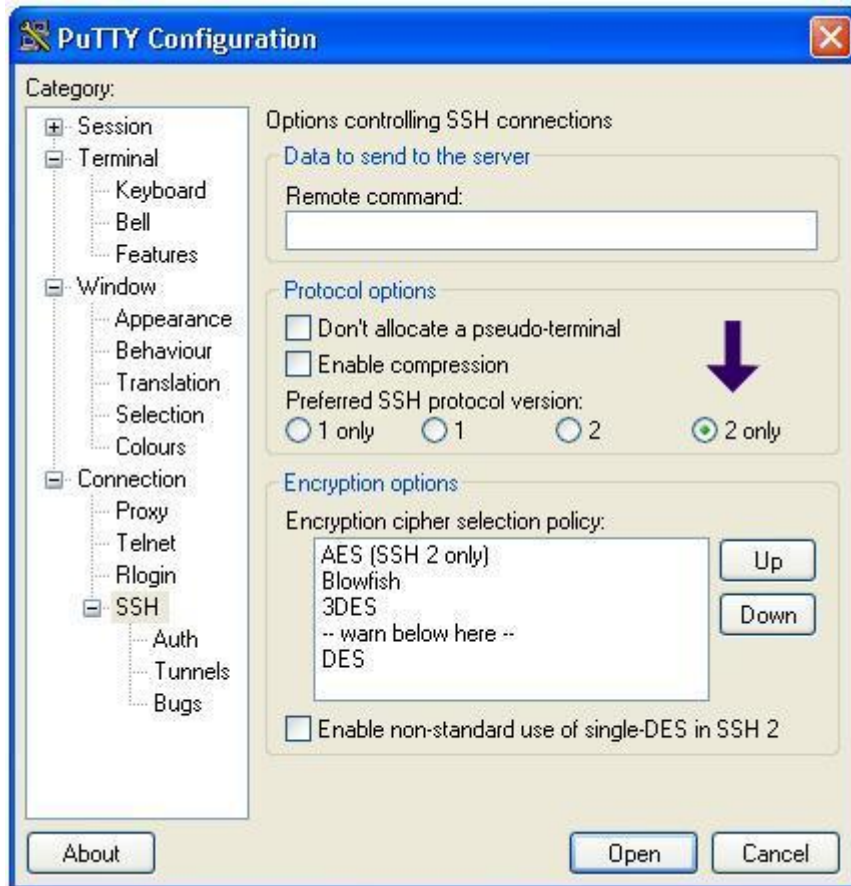


Enter `login.kutztown.edu` as the Host Name.
Under Protocol, select SSH.

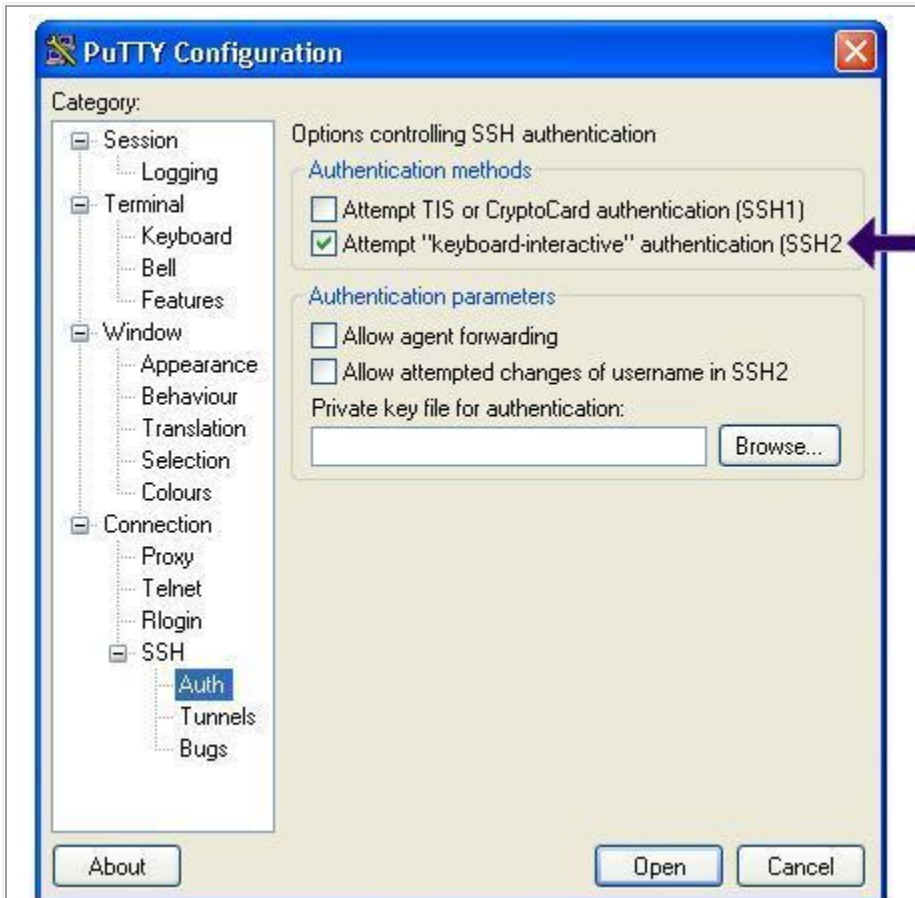


Click Terminal.

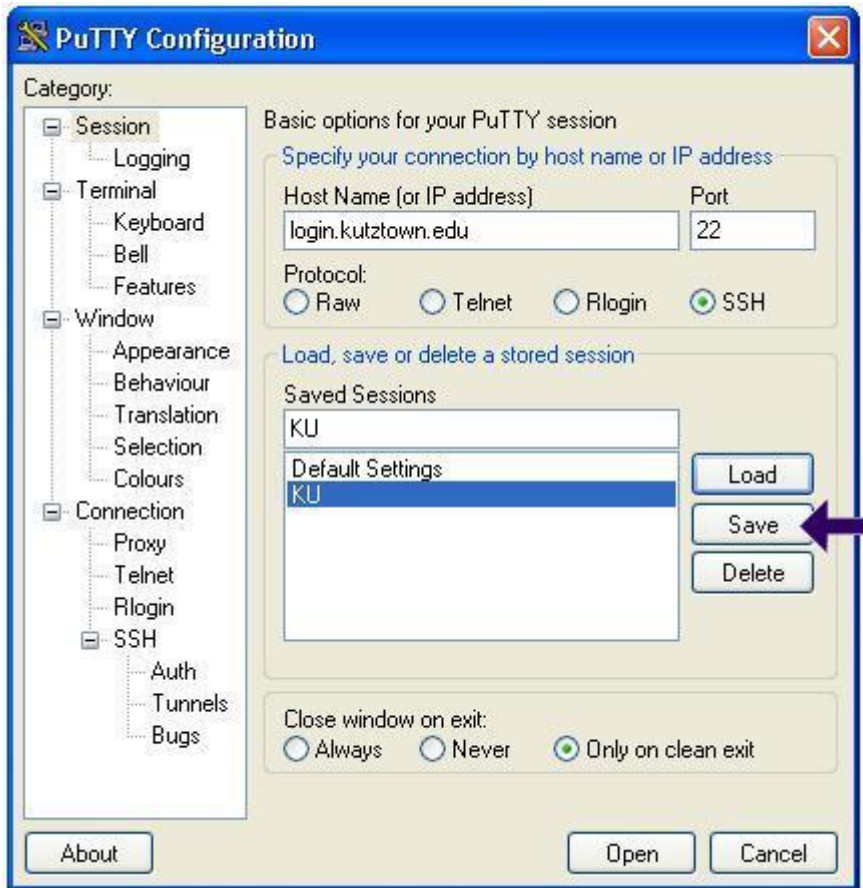
Under Remote-controlled printing, select the name of your local printer.



Click Connection. Click SSH.
Under Protocol options, select *2 only*.



Click Auth
Check Attempt keyboard-interactive authentication(SSH2).



Click Session.

Type KU in the Saved Sessions box.

Click Save.

Double-Click KU to launch.



The above alert may appear the first time you connect to login. Simply click Yes.